

Environmental Product Declaration

In accordance with ISO 14025
and EN 15804:2012+A2:2019



COLORBOND® steel for roofing and walling **EPD**



Programme: **EPD Australasia** | epd-australasia.com

Programme Operator: **EPD Australasia Limited**

EPD Registration number: **S-P-00999**

Version **2.0**

Publication date: **27-03-2017**

Version date: **20-03-2023**

Valid until: **20-03-2028**


Geographical scope: **Australia**



Environmental Product Declaration

COLORBOND® steel

Programme-Related Information and Verification

EPD Owner:	BlueScope Steel Ltd steeldirect@bluescopesteel.com www.bluescope.com Level 11, 120 Collins St, VIC 3000, Australia
EPD Produced by:	thinkstep-anz info@thinkstep-anz.com www.thinkstep-anz.com
Programme Operator:	EPD Australasia Ltd info@epd-australasia.com www.epd-australasia.com 315a Hardy Street, Nelson 7010, New Zealand
Product Category Rules (PCR):	PCR 2019:14 Construction Products, Version 1.11, 2021-02-05
PCR review conducted by:	The Technical Committee of the International EPD® System Chair: Claudia A. Peña Contact: info@environdec.com
Independent verification of the declaration and data, according to ISO 14025:	<input type="checkbox"/> EPD process certification <input checked="" type="checkbox"/> EPD verification (external)
Third party verifier:	 Rob Rouwette, start2see Pty Ltd Rob.Rouwette@start2see.com.au
Verifier approved by:	EPD Australasia Ltd
Procedure for follow-up during EPD validity involves third party verifier:	<input type="checkbox"/> Yes <input checked="" type="checkbox"/> No
Version History:	v1.0 Initial release. v1.1 Correction of Product Content table and minor text changes; update of background data to GaBi Databases 2018; update of Green Star Additional Indicators for Land use and Resource depletion – water. v2.0 Updated in line with 5-year validity, including updated hotspot data covering over 95% of all impacts. Results for additional base metal thicknesses (BMTs), paint finishes, and indicative results inclusive of rollforming operations have been added.

General Information

- EPDs within the same product category but from different programmes may not be comparable.
- EPDs of construction products may not be comparable if they do not comply with EN 15804:2012+A2:2019 or if they are produced using different Product Category Rules (PCR).
- BlueScope Steel Limited has sole ownership, liability and responsibility for this EPD.



**Pembroke Middle School
Redevelopment**

Kensington, SA

Architect:
Grieve Gillett Andersen

Photography:
Sam Noonan

COLORBOND® steel
Basalt® in a Matt finish

Environmental Product Declaration

COLORBOND® steel

BlueScope Steel Products

Penrith Anglican College Performing Arts Centre

Designed by Terroir, the new Performing Arts Centre includes an expansive and visually striking roof made from COLORBOND® steel Surfmist® in a Classic finish.

The selection of COLORBOND® steel Surfmist® in a Classic finish made good sense for the Penrith location where maximum temperatures in summer can reach 40 degrees or more¹. COLORBOND® steel Surfmist® in a Classic finish has a low solar absorptance value and can help keep the roof space and building cooler on a hot sunny day².

Performing Arts Centre

Penrith Anglican
College, NSW

Architect: Terroir

Photography:
Brett Boardman

COLORBOND® steel
Surfmist® in a Classic
finish



Declared Unit

This EPD provides data for one flat square metre (1 m²) of COLORBOND® steel for roofing and walling (XRW) manufactured by BlueScope in Australia at certain Base Metal Thicknesses (BMTs) ranging from 0.30 to 1.00 mm.

The product range represented by this EPD is COLORBOND® steel for roofing and walling³ (XRW) with a hot dipped aluminium, zinc, and magnesium alloy (AM100) coating. It excludes all other COLORBOND® steel products, such as COLORBOND® steel for garage doors, fencing, patios and pergolas and insulated panels, COLORBOND® steel Metallic, COLORBOND® Coolmax® steel, COLORBOND® Ultra steel and COLORBOND® Intramax® steel.

Key Insights

Benefits of using this EPD 8

This EPD can contribute to the achievement of credits under green building rating schemes. It:

- Is independently verified
- Includes indicators for Green Star and IS Rating

BlueScope's Climate Action 10

Steel and embodied carbon	11
Achieving sustainable outcomes with steel	12

Product Information 16

Product description	16
Product content	17
Scope of the declaration	19

- Cradle to gate (A1-A3) with modules C1-C4 and module D
- Includes an extension of the A1-A3 scope to include rollforming up to the rollformer gate

Environmental Performance 22

Results for one flat square metre (1 m ²) of COLORBOND® steel for roofing and walling (XRW) in the following base metal thicknesses (BMTs) where the base metal is the steel:	
• 0.30 mm	24
• 0.35 mm	26
• 0.40 mm	28
• 0.42 mm	30
• 0.45 mm	32
• 0.48 mm	34
• 0.55 mm	36
• 0.60 mm	38
• 0.70 mm	40
• 0.75 mm	42
• 1.00 mm	44

Note: EN 15804:2012+A1:2013 compliant results are also given in this document to assist comparability across EPDs and support use in tools such as Green Star and IS Rating.

Benefits of using this EPD

This EPD can contribute to the achievement of credit points under Green Star rating tools, the IS Rating Scheme (IS) and other leading green building rating schemes.

Green Star

Green Star registered projects can score points for using products with EPDs. BlueScope's steel products and this EPD may help obtain points in:

- Green Star – Design and As Built v1.3
 - Credit 19A – Life Cycle Assessment
 - Credit 19B.2 – Life Cycle Impacts – Steel
 - Credit 20.1 – Responsible Building Materials
 - Credit 21 – Sustainable Products
- Green Star – Buildings
 - Credits 6 to 9 – Responsible Products (Structure, Envelope, Systems or Finishes)
 - Credit 21 – Upfront Carbon Emissions
 - Credit 26 – Life Cycle Impacts
- Green Star – Communities v1.1
 - Credit 26 – Materials

IS Rating

IS projects can claim points for using products with EPDs. EPD results can also be included in the IS Materials Calculator and may help a project achieve reductions compared to a 'base case' footprint.

BlueScope's steel products and this EPD may help obtain points in:

- IS Design & As Built v1.2
 - Mat-1 Materials Life Cycle Impact Measurement and Reduction
 - Mat-2 Environmentally Labelled Products and Supply Chains
- IS Design & As Built v2.1
 - Rso-6 Materials Life Cycle Impact Measurement and Reduction
 - Rso-7 Sustainability Labelled Products and Supply Chains

BlueScope's products are also included in the Infrastructure Sustainability Council (ISC) ISupply Directory which connects products and services with projects and assets undertaking IS ratings.

This EPD also provides:

- Environmental performance information from cradle to gate (modules A1-A3), with an extension of the A1-A3 scope to include rollforming up to the rollformer gate, plus modules C1-C4 and module D
- Carbon footprint data for use in Scope 3 carbon footprint calculations of your supply chain
- A wide range of environmental metrics, such as water, energy and waste

For more information on how BlueScope's products can help achieve more sustainable project outcomes contact BlueScope Steel Direct on 1800 800 789.

Take care when comparing

When comparing EPDs it is important to consider:

- EPDs within the same product category but from different programmes or utilising different Product Category Rules (PCRs) may not be comparable.
- The results for EN 15804:2012+A1:2013 compliant EPDs are not comparable with EN 15804:2012+A2:2019 compliant ones, as the methodologies differ. This EPD provides additional results in accordance to EN 15804:2012+A1:2013 to assist comparability across EPDs and support use in rating tools such as Green Star and IS Rating.
- EPDs of construction products from a group of manufacturers (industry-wide EPD) may not be comparable to an EPD of a similar construction product that has been generated by a single manufacturer (product-specific or manufacturer-specific EPD).
- Understanding the detail is important in comparisons. Expert analysis is often required to understand the detail and ensure data is truly comparable, to avoid unintended distortions.
- The best way to compare products and materiality of differences is to place them into the context of a structure across the whole life cycle.

If you need help interpreting the data in this EPD, please contact BlueScope Steel Direct on 1800 800 789.

BlueScope's Climate Action

Steel is an essential material for modern society and a critical enabler of sustainable development. We recognise that steelmaking is emissions-intensive and we are committed to climate action. Our climate strategy outlines our decarbonisation plans, including our goal of net zero greenhouse gas emissions across our operations by 2050⁴, dependent on several enablers based around technology, renewable energy and public policy.

We have a promising innovation pipeline including collaborations with Rio Tinto and others, to explore ways to decarbonise iron and steelmaking processes. We believe these projects will help take us to the cutting edge of current technologies and demonstrate our commitment to reduce the embodied carbon of our products.

More information on BlueScope's climate action, can be found on our website: www.bluescope.com/sustainable-steel

OUR PATHWAY

SET A GOAL FOR:

NET ZERO

GHG emissions across our operations by 2050⁴

SET TARGETS FOR:

12%

GHG emission intensity reduction by 2030 for our steelmaking activities (based on 2018 levels)

30%

GHG emission intensity reduction by 2030 for our non-steelmaking activities⁵ (based on 2018 levels)

4. Our net zero goal covers BlueScope's Scope 1 and 2 GHG emissions. Achieving the 2050 net zero goal is highly dependent on several enablers, including commerciality of emerging and breakthrough technologies, the availability of affordable and reliable renewable energy and hydrogen, availability of quality raw materials, and appropriate policy settings.

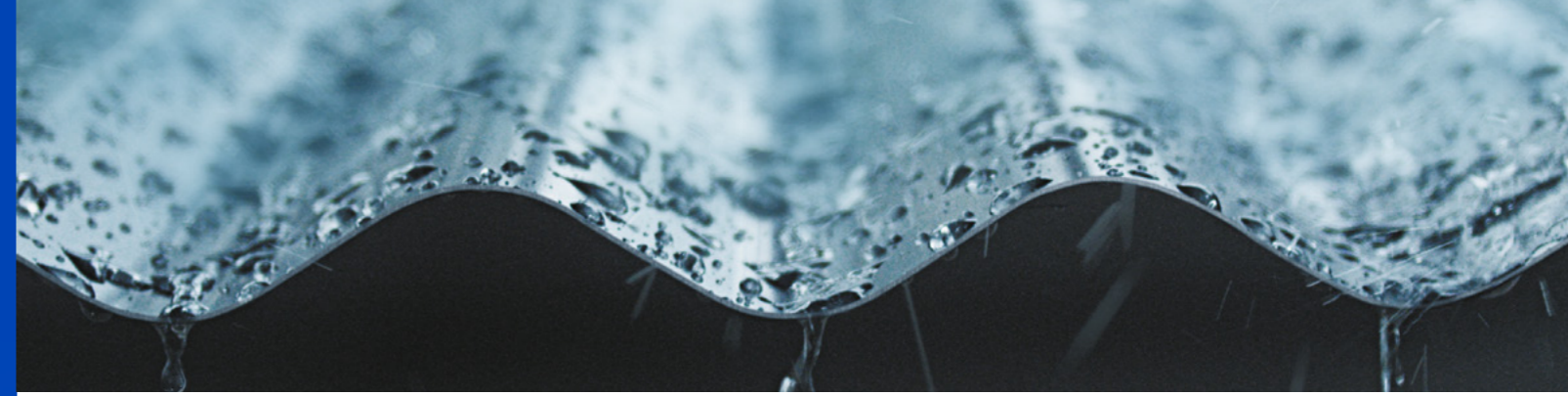
5. The Non-Steelmaking Target applies to our midstream activities that include our cold rolled, metal coating and painting lines and long and hollow products. It excludes our downstream activities.

6. Pickin J et al., National Waste Report 2020, Prepared for the Department of Agriculture, Water and the Environment; 2020, p. 39.

7. Refers to the carbon emissions or emissions of greenhouse gases, associated with materials throughout the life cycle of a building or infrastructure, not to the carbon content in the metal alloy.

8. www.worldsteel.org/about-steel/steel-facts.html

9. www.iea.org/reports/iron-and-steel-technology-roadmap



Steel and Embodied Carbon

Steel is one of the most recycled materials in the world, with the inherent value of scrap driving its recovery. In Australia, this is evidenced by a recycling rate for metals of 90%⁶. The recyclability of steel is enabled by its magnetic properties, which mean that it can be easily separated for recycling and is less likely to end up in landfill.

The recycled content in a steel product can have a significant effect on embodied carbon. While specifying high levels of recycled content can be an effective way of minimising the embodied carbon⁷ of many materials, especially those likely to be disposed of at end of life, recycled content is not necessarily a useful metric for steel in the context of reduction of carbon emissions by the steel sector. This is because despite being one of the most recycled materials in the world⁸, there is not enough steel scrap available to meet the growing global demand for steel⁹.

Specification of 'secondary' steel or steel products with higher levels of recycled content as a means of reducing embodied carbon, is unlikely to cause more steel to be recycled. Rather, doing so may shift the environmental burden around the value chain, and in fact increase the burden, as scrap and the final product may be transported around the globe unnecessarily.

While global demand for scrap continues to outstrip supply, the development and deployment of new low GHG emissions technologies for 'primary' steel production (using raw material inputs such as iron ore and metallurgical coal) while increasing the role of 'secondary' steelmaking (principally using scrap steel), will be key to reducing carbon emissions in the steel sector.



BlueScope is a founding member of ResponsibleSteel™, the steel industry's first global multi-stakeholder standard and certification program. It has been designed to ensure customers, stakeholders and consumers can be confident that the steel they use has been sourced and produced responsibly.

Initiatives, such as ResponsibleSteel™, are incorporating new methodologies to ensure that the carbon emissions of steel products are calculated on a like-for-like basis, irrespective of the input materials used and the steel production technology.

Embodied carbon and climate transition in a hard-to-abate sector

There is growing recognition from research and standard setting organisations that the percentage of recycled content in steel is not a good proxy for climate transition for the steel sector.

New methodologies, tools and guidance are being developed by organisations such as ResponsibleSteel™, to enable steel companies to set targets that align with science-based decarbonisation pathways and consider the unique context of the sector.

BlueScope is a participant in the Expert Advisory Group convened by the Science Based Targets initiative (SBTi) for the development of science-based target setting methodologies, tools and guidance in the steel sector to help meet the 1.5 °C goal of the Paris Agreement.

These initiatives build on the work of the Net Zero Steel Pathway Methodology Project (NZSPMP), which developed recommendations to identify and recognise low carbon emissions steelmaking, irrespective of the proportion of scrap or iron ore used as the primary input material. This approach would enable users to identify and reward reductions in embodied carbon and efficiencies in manufacturing practices for the steel sector, rather than simply identifying products that use more or less scrap steel, creating the basis for downstream users of steel to contribute to the achievement of the Paris Agreement through their steel specifying and purchasing decisions, and to recognise responsible steelmakers for their own commitment.

More information: www.sciencebasedtargets.org/sectors/steel and www.netzerosteelproject.com

Achieving Sustainable Outcomes with Steel

Steel is central to a circular economy – one where resources and materials are kept in use for as long as possible and then repaired, returned or recycled. Steel can be infinitely recycled and is 100% recyclable without loss of quality.

Design considerations

Life cycle thinking. A focus on design is important to minimise the whole of life impact of any construction project. Steel is a strong, durable and versatile material. It lends itself well to structures that are designed for long life, resilience and flexibility to accommodate multiple future reuse options without reinvestment in structural alteration and refurbishment. Steel also supports designs where end of life considerations are key e.g. designing for disassembly and reuse.

Dematerialisation. BlueScope manufactures a range of standard and high strength steel grades in plate and coil form. High strength steel grades enhance the strength to weight performance in structural steel applications when the design is governed by strength; by maximising the strength grade, a reduced volume of steel would be required in these applications, e.g. columns and primary members. This in turn can result in embodied carbon savings relative to a reference building design that utilises standard steel grades.

Specification considerations

ResponsibleSteel™. ResponsibleSteel™ is the steel industry's first global multi-stakeholder standard and certification initiative. The ResponsibleSteel™ Standard covers a wide range of sustainability topics, including Climate Change and Greenhouse Gas Emissions, Biodiversity, Water Stewardship and Human Rights. Specifying steel from a ResponsibleSteel™ certified site supports steel manufacturers such as BlueScope who are committed to climate action and sustainability. It also supports those downstream to manage ESG (Environmental, Social and Governance) risks in the steel supply chain.

More information: www.responsiblesteel.org

EPDs and ecolabels. EPDs and ecolabels demonstrate a manufacturer's commitment to product transparency and stewardship. EPDs and ecolabels provide key sustainability information to support decision-making and the achievement of more sustainable outcomes.

Further information on the sustainability credentials of BlueScope's products: www.steel.com.au

Manufacturer commitments and investment. Understand the commitments manufacturers have made to sustainability and climate change action and consider their investment in Research & Development activities.

More information on BlueScope's commitments and activities can be found in our Climate Action Report and Sustainability Report: www.bluescope.com/sustainable-steel/reports/



Three Capes Walking Lodges

Tasman Peninsula, Tasmania

Architect: Andrew Burns Architecture

Photography: Brett Boardman

COLORBOND® steel Monument® in a Classic finish

Environmental Product Declaration

COLORBOND® steel

Contributing to a Sustainable Future

BlueScope has a long-standing commitment to developing innovative, responsible products and services. You can design and specify with confidence, knowing that COLORBOND® steel for roofing and walling (XRW) is created with durability, performance, compliance and sustainability top of mind.

Steel and the Circular Economy

Steel is strong, durable, and versatile and its inherent properties allow it to be recycled without loss of quality over and over again. In some cases, it can be reused without reprocessing, again saving on energy and resource use.

To help support a more sustainable 'circular economy', the steel manufactured by BlueScope in Australia incorporates pre- and post-consumer recycled content¹⁰. Steel is 100% recyclable and its magnetic properties mean that it can be easily separated for recycling and is less likely to end up in landfill.

Durable and Resilient

COLORBOND® steel for roofing and walling (XRW) is tried and tested in Australian conditions to look great and deliver outstanding, long life performance. COLORBOND® steel is durable and resilient to Australia's harsh climate and incorporates BlueScope's industry-leading metallic coating, incorporating Activate® technology, to provide enhanced corrosion resistance. Its long life can help conserve resources and energy that may otherwise be invested in products with shorter life spans.

Thermal Performance

COLORBOND® steel for roofing and walling's (XRW) core colour range in the Classic and Matt finish (excluding Night Sky®) features our scientifically designed Thermatech® solar reflectance technology. With Thermatech® solar reflectance technology, even the darker colours in the COLORBOND® steel range have solar reflective properties which may help a building stay cooler. Thermatech® technology is designed to reflect more of the sun's heat on hot, sunny days which may help reduce dependence on air-conditioning¹¹. Using less energy to cool buildings can help occupants save money on energy costs.

Light coloured COLORBOND® steel can help create cool roofs (which are roofs that have a high solar reflectance and thermal emittance). Light coloured materials, like COLORBOND® steel Surfmist®, have inherent environmental benefits including the potential to reduce energy use and greenhouse gas emissions through improved energy efficiency, and mitigation of urban heat islands.

COLORBOND® steel is available in a range of lighter colours which meet the National Construction Code and the NSW Building Sustainability Index (BASIX) solar absorptance requirements for roofs, as well as the Green Star rating Solar Reflectance Index (SRI) benchmark for the Heat Island Effect and Heat Resilience credits.

For more information visit www.steel.com.au



Global GreenTag^{Cert™} GreenRate™ Certification

GreenRate™¹² is an ecolabelling program that robustly provides a holistic sustainability assessment of the product. It is designed to meet the requirements of the Green Star 'Sustainable/Responsible Products' credits and the IS Rating 'Environment/Sustainability Labelled Products' credits.

GreenRate™ looks in detail at product health, ecotoxicity and other priority assessment criteria, including resource use, durability, waste reduction and availability of greenhouse gas and water footprints. Certified products are also examined to ensure they meet the GreenRate™ 'fit for purpose' criteria.

Selected BlueScope products have been certified under the GreenTag^{Cert™} GreenRate™ program. To check which BlueScope products have been certified and their certification status visit: www.globalgreentag.com/manufacture-bluescope-steel-limited

Warranty Confidence

When you specify, purchase or install COLORBOND® steel you are also benefiting from the support of BlueScope, one of Australia's largest manufacturers. COLORBOND® steel is renowned for its durability, and is backed up by BlueScope. BlueScope offers a variety of warranties subject to application and eligibility criteria.¹³



Certification of Port Kembla Steelworks

BlueScope's Port Kembla Steelworks is certified to the ResponsibleSteel™ Standard version 1.1. Australia's largest steel production facility has an annual production capacity of approximately 3 million tonnes of crude steel.

It manufactures slab, hot rolled coil and plate products. Branded products such as COLORBOND® steel, TRUECORE® steel, ZINCALUME® steel and XLERPLATE® steel are manufactured from steel produced at the Port Kembla Steelworks.

10. Across the range of steel products manufactured by BlueScope in Australia, the average recycled content (according to recycled content categories defined in ISO 14021:2016) in the steel is 17.4%, which includes pre- and post-consumer recycled materials. Scrap and iron-bearing materials generated and reclaimed from BlueScope's steelmaking, coating and painting operations represent an additional 6.8% recovered content, which is not reported as recycled content. Scrap from rollforming and fabrication processes are included as pre-consumer recycled content. The figures provided represent our best estimate at the time of publication. For more information please contact BlueScope Steel Direct on 1800 800 789.

11. Results will depend on roof colour, level and location of insulation, and type, location, shape and function of the building.

12. The GreenTag marks are registered certification mark/s owned by Dual Harmony Pty Ltd and Licensed to Global GreenTag International Pty Ltd.

13. Warranties subject to exclusions, application, and eligibility criteria. For full terms and conditions visit www.bluescopesteel.com.au/warranties.

Environmental Product Declaration

COLORBOND® steel

Declared Unit

This EPD is valid for one flat square metre (1 m²) of COLORBOND® steel for roofing and walling (XRW) manufactured by BlueScope in Australia.

Product Description

COLORBOND® steel for roofing and walling (XRW) is a versatile and highly durable sheet metal cladding material. It is available in a core colour range in the Classic and Matt finishes as well as applicable COLORBOND® steel Studio colours (colorbondstudio.com).

This EPD sets out information on the average COLORBOND® steel for roofing and walling (XRW) product¹⁴ manufactured by BlueScope in Australia, in the base metal thicknesses (BMTs) presented in the table below.

The product range represented by this EPD only includes COLORBOND® steel for roofing and walling (XRW) with a hot dipped aluminium, zinc, and magnesium alloy (AM100) coating. It excludes all other COLORBOND® steel products, such as COLORBOND® steel for garage doors, fencing, patios and pergolas and insulated panels, COLORBOND® steel Metallic (MET), COLORBOND® Coolmax® steel, COLORBOND® Ultra steel and COLORBOND® Intramax® steel. This EPD also excludes removable films that may be applied to COLORBOND® steel at the paint line for protection during transport and installation.

The COLORBOND® steel for roofing and walling (XRW) products represented in this EPD consist of a low carbon¹⁵ steel substrate that is coated with a metallic coating incorporating BlueScope's Activate® technology (hot dipped aluminium, zinc, and magnesium alloy AM100 coating) to provide enhanced corrosion resistance, and then further protected and enhanced with a specially developed, exterior-grade, oven-baked paint system.

The metallic coated base steel (G300S or G550S strength grade), conforms to AS 1397:2021 *Continuous hot-dip metallic coated steel sheet and strip - Coatings of zinc and zinc alloyed with aluminium and magnesium*.

The paint system meets the performance requirements of AS/NZS 2728:2013 *Prefinished/pre painted sheet metal products for interior/exterior building applications - Performance requirements*.

Product	Metallic Coating	Base Metal Thickness (BMT)	Product mass (kg/m ² flat product)
COLORBOND® steel for roofing and walling (XRW)	AM100	0.30 mm	2.51
		0.35 mm	2.91
		0.40 mm	3.30
		0.42 mm	3.46
		0.45 mm	3.69
		0.48 mm	3.93
		0.55 mm	4.48
		0.60 mm	4.87
		0.70 mm	5.65
		0.75 mm	6.05
		1.00 mm	8.01

14. Refer to the COLORBOND® steel for roofing and walling (XRW) datasheet at www.steel.com.au

15. The term 'low carbon steel' refers to the carbon content in the metal alloy (which is typically less than 0.3% carbon content), and not to the carbon dioxide (CO₂) emissions associated with the product.

16. Results are based on rollforming data corresponding to a 12 month period, which varied by rollformer (ranging from July 2018 to June 2021). Some of this data has been obtained from third parties. BlueScope does not accept any responsibility for the accuracy, completeness or reliability of data provided by third parties.

Manufacturing Process

In Australia, BlueScope manufactures steel from raw and recycled materials using an 'integrated steelmaking' method. This involves the use of iron ore, coal, steel scrap, fluxes (limestone and dolomite) and alloying materials to produce steel slab via the major processes of sintering, coke making, Blast Furnace/Basic Oxygen Furnace (BF-BOF) steelmaking and continuous slab casting, prior to hot rolling into hot rolled coil steel.

The hot rolled coil is then cold reduced. Cold reduction involves pickling (acid cleaning) the coil, followed by cold rolling, where the steel coil is compressed and elongated through rolls to reduce its thickness and increase the strength of the steel. Following cold reduction, the coil is annealed to the required strength, metallic coated for corrosion resistance and skin passed for improved surface finish at the continuous hot-dipped metal coating lines. The metallic coated coil is then transferred to a paint line, where pre-treatment, primer, finish and reverse coat layers are baked on to produce the COLORBOND® steel product prior to recoiling and packaging ready for shipment to customers for processing.

Downstream processing

COLORBOND® steel for roofing and walling (XRW) is supplied by BlueScope to downstream processors in coils. These coils are un-coiled and formed into roofing and walling profiles, as well as gutter, fascia, downpipes and accessory products. The finished products are delivered to construction sites for installation. A wide variety of attractive profiles with different spanning strengths, fixing methods and visual aesthetics are produced.

To provide indicative results for the final formed product up to the rollforming gate, data has been obtained from selected sites of several rollformers based in Australia, including Lysaght (all sites), Metroll (Perth, Albany and Bunbury sites) and Steeline (Hunter sites). These results are presented as 'A1-A3 incl. rollforming' in the Results section. The indicative rollforming results represent an average of the data collected from the surveyed sites only¹⁶. These results may not be representative of the final formed product from any particular rollforming operation, company or site. Actual results will vary depending on a range of factors specific to the particular operations of the downstream processors.



Product Content

The average composition¹⁷ of one flat square metre (1 m²) of COLORBOND® steel for roofing and walling (XRW) is:

Product composition		Mass (kg)	Recycled material (pre- and post-consumer)
Steel Substrate	Carbon Steel	2.36 (0.30 mm) - 7.85 (1.00 mm)	17.4% (average recycled content in the steel manufactured by BlueScope in Australia) ¹⁸
	Aluminium	0.049-0.059	-
Metallic Coating	Magnesium	0.001-0.003	-
	Silicon	0.001-0.002	-
	Zinc	0.040-0.053	-
Paint Coatings	Topcoat ¹⁹	0.04	-
	Backing coat ²⁰	0.02	-

Packaging Materials	Mass (kg)	Packaging (as % of product mass)
Steel	0.012	0.15%-0.48%
Plastic (excl. CORSTRIP® film/strippable film ²¹)	0.002	0.02%-0.08%
Cardboard	0.001	0.01%-0.04%
Timber	0.007	0.09%-0.28%

COLORBOND® steel for roofing and walling (XRW) is compliant with the European REACH regulation²². For safe use and maintenance information, refer to the product Safety Data Sheet (SDS) at www.steel.com.au/library.

What is an SDS?

A Safety Data Sheet (SDS) is a document that describes the chemical and physical properties of a product or material and provides safe handling and use information.

Industry Classification

Product	Classification	Code	Category
COLORBOND® steel for roofing and walling (XRW)	UN CPC	41231	Flat-rolled products of non-alloy steel, clad, plated, coated or otherwise further worked
	ANZSIC	2110	Iron Smelting and Steel Manufacturing

17. The product composition provided is an average and variability among individual products is expected. Please note that we are constantly working to improve our products and changes to their composition may occur over time. If clarification on a particular product is needed please contact BlueScope Steel Direct on 1800 800 789.

18. Across the range of steel products manufactured by BlueScope in Australia, the average recycled content (according to recycled content categories defined in ISO 14021:2016) in the steel is 17.4%, which includes pre- and post-consumer recycled materials. Scrap and iron-bearing materials generated and reclaimed from BlueScope's steelmaking, coating and painting operations represent an additional 6.8% recovered content, which is not reported as recycled content. Scrap from rollforming and fabrication processes are included as pre-consumer recycled content. The figures provided represent our best estimate at the time of publication. For current recycled content figures please contact BlueScope Steel Direct on 1800 800 789.

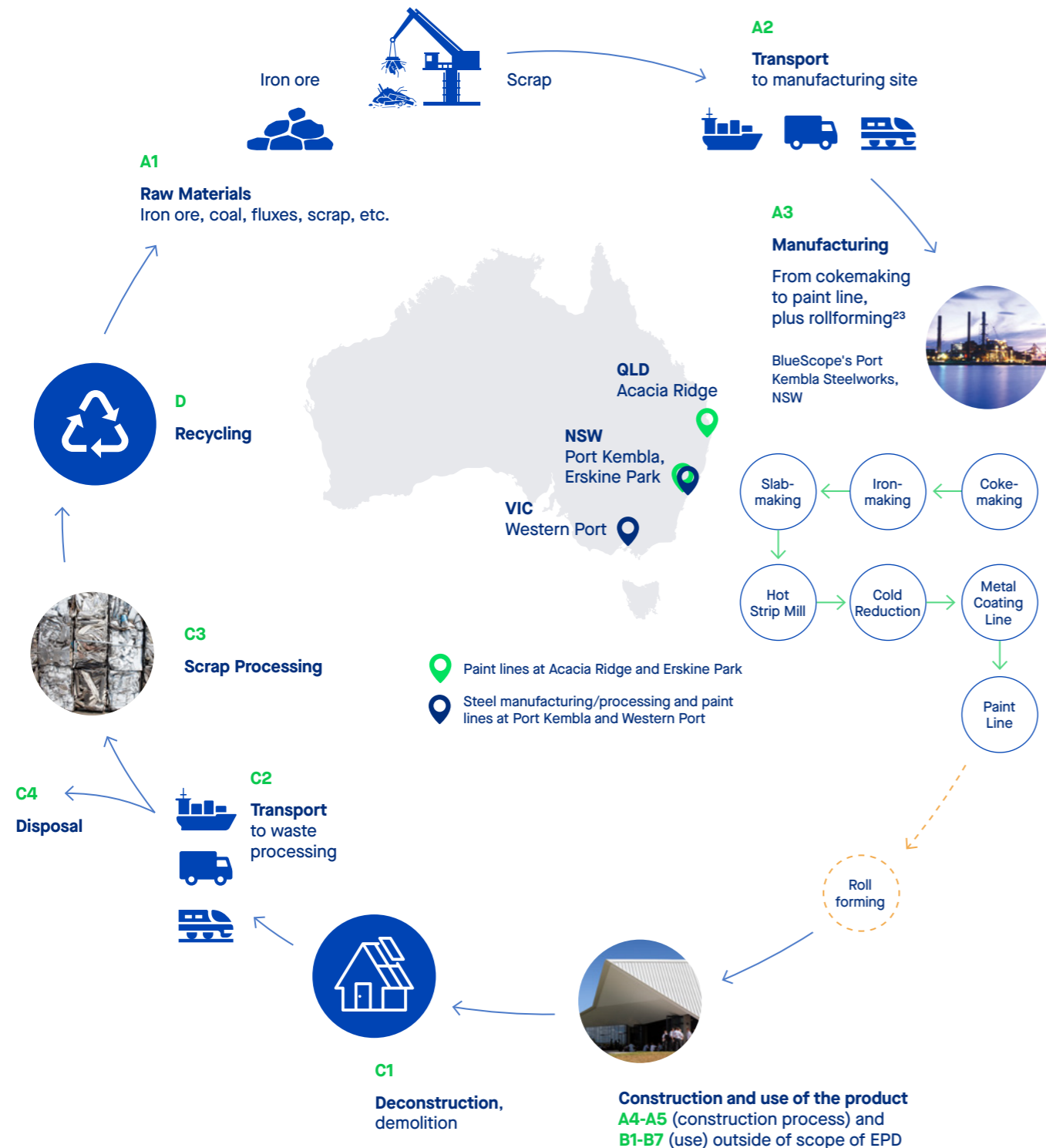
19. Proprietary coatings (pre-treatment, primer and finish coat).

20. Proprietary coatings (pre-treatment, primer and reverse coat).

21. Some COLORBOND® steel products are delivered with CORSTRIP® film to protect the product from damage during transport and installation. CORSTRIP® film is made from 100% low-density polyethylene (LDPE). Note occasionally strippable film may be supplied in lieu of CORSTRIP® film for operational reasons.

22. Regulation (EC) No. 1907/2006 of the European Parliament and of the Council of 18 December 2006 on the Registration, Evaluation, Authorisation and Restriction of Chemicals (REACH).

COLORBOND® steel Manufacturing and Processing in Australia



Scope of Declaration

This declaration is for one flat square metre (1 m²) of COLORBOND® steel for roofing and walling (XRW) manufactured by BlueScope in Australia²⁴. The scope of this declaration is from cradle to gate (modules A1-A3), with modules C1-C4 and module D. It includes an extension of the modules A1-A3 to include rollforming up to the rollformer gate²⁵.

Modules A4-A5 (construction process) and B1-B7 (use) have not been included due to the inability to predict how the material will be used following manufacture.

The system boundary applied in this study extends from mining of raw materials such as iron ore and coal; transport to and within the manufacturing site; coke, sinter, iron and steel manufacture; ancillary service operations; hot rolling of steel products, cold reduction, metallic coating and coil painting and packaging for dispatch to direct customers at the exit gate of the paint line. Removable films that may be applied to COLORBOND® steel at the paint line for protection during transport and installation are excluded from the scope of this EPD.

The system boundary has been extended to include transport to the rollforming site, rollforming operations and packaging for dispatch to rollformers' customers at the exit gate of the rollforming site, presented as 'A1-A3 incl. rollforming' in the Results section.

The system boundary also includes manufacture of other required input materials, transport between processing operations, the production of external services such as electricity, natural gas and water, and the production of co-product materials within the steelmaking process, which have been removed by the use of allocation techniques. Wastes and emissions to air, land and water are also included, as are modules C1-C4 (end of life stage), and module D (reuse, recovery and/or recycling potential).

Modules	Product stage			Construction process stage		Use stage							End of life stage			Benefits and loads beyond the system boundary	
	Raw material supply	Transport	Manufacturing	Transport	Construction / installation	Use	Maintenance	Repair	Replacement	Refurbishment	Operational energy use	Operational water use	De-construction, demolition	Transport	Waste processing		Disposal
Modules declared	X	X	X	ND	ND	ND	ND	ND	ND	ND	ND	ND	X	X	X	X	X
Geography	AU	AU	AU	-	-	-	-	-	-	-	-	-	AU	AU	AU	AU	GLO
Specific data	>90%			-	-	-	-	-	-	-	-	-	-	-	-	-	-
Variation - products	<10%			-	-	-	-	-	-	-	-	-	-	-	-	-	-
Variation - sites	<10%			-	-	-	-	-	-	-	-	-	-	-	-	-	-

X = Module declared; ND = Not declared (such a declaration shall not be regarded as an indicator of a zero result).

23. Results inclusive of the rollforming process are presented as 'A1-A3 incl. rollforming' in the Results section.

24. As described in the Product Description on page 16.

25. To provide indicative results for the final formed product up to the rollforming gate, data has been obtained from selected sites of several rollformers based in Australia. Results are based on rollforming data corresponding to a 12 month period, which varied by rollformer (ranging from July 2018 to June 2021). The results represent an average of the data from the surveyed sites only. These results may not be representative of the final formed product from the rollforming operations of other companies or sites. Actual results will vary depending on a range of factors specific to the particular operations of the downstream processors. Some of this data has been obtained from third parties. BlueScope does not accept any responsibility for the accuracy, completeness or reliability of data provided by third parties.

Life Cycle Assessment (LCA) Methodology

This EPD has been produced in conformance with the requirements of PCR 2019:14 v1.11 Construction Products, the Instructions of the Australasian EPD Programme v3.0, and the International EPD® System General Programme Instructions (GPI) v3.01.

Primary data

This study focuses on the further processing of steel beyond hot rolling to produce COLORBOND® steel for roofing and walling (XRW). Upstream hot rolled steel manufacturing data for low carbon²⁶ Hot Rolled Coil used in this study was obtained from v2.0 of the EPD for Steel – Hot Rolled Coil (S-P-00557).

Primary data were collected for all relevant BlueScope manufacturing sites in Australia, for all inputs and outputs in the production stage (A1-A3). The original study (v1.1 of the EPD for COLORBOND® steel (S-P-00999) published in 2019) was based on an annual average for the time period July 2014 to June 2015. This update is based on an annual average for the time period July 2018 to June 2019. All direct emissions data were also updated using the average results reported to the National Pollution Inventory over the 3-year period 2016 to 2019.

To provide indicative results for the final formed product up to the rollforming gate²⁷, primary data for rollforming were collected from selected sites of several rollformers based in Australia, including Lysaght (all sites), Metroll (Perth, Albany and Bunbury sites) and Steeline (Hunter sites). The data was collected across a 12 month period ranging from July 2018 to June 2021 for each site.

Secondary data

The secondary data used were procured from the GaBi Life Cycle Inventory Database 2022²⁸. Most datasets used have a reference year between 2018 and 2021 and all fall within the 10-year limit allowable for generic data under EN 15804.

For the modelling for BlueScope's manufacturing sites, the electricity supply was based on GaBi's state-specific 1kV-60kV grid mix datasets for NSW, VIC and QLD as relevant to each BlueScope manufacturing site.

The 2019 1kV-60kV NSW grid mix dataset is highly reliant on hard coal (77%), with imports from VIC (6.5%) and QLD (5.6%), and generation from hydro (4.1%), natural gas (3.3%), wind (2.5%) and photovoltaics (0.74%). The emission factor for the 2019 1kV-60kV NSW grid for the GWP-GHG indicator is 0.987 kg CO₂-eq./kWh (GaBi database 2022).

The 2019 1kV-60kV VIC grid mix dataset is highly reliant on lignite (80%), with generation from hydro (6.3%), wind (6.2%), and natural gas (3.2%), and imports from TAS (2.4%), NSW (1.1%) and SA (0.68%). The emission factor for the 2019 1kV-60kV VIC grid for the GWP-GHG indicator is 1.13 kg CO₂-eq./kWh (GaBi database 2022).

The 2019 1kV-60kV QLD grid mix dataset is highly reliant on hard coal (84%), natural gas (11%), and coal gases (3.1%), with generation from hydro (1.1%) and imports from NSW (0.44%). The emission factor for the 2019 1kV-60kV QLD grid for the GWP-GHG indicator is 1.02 kg CO₂-eq./kWh (GaBi database 2022).

For the modelling for rollforming operations, GaBi state-specific grid mix datasets were used to create a production-weighted average grid mix, based on BlueScope's transport data to rollformers in different States, resulting in an emission factor for the GWP-GHG indicator of 0.942 kg CO₂-eq./kWh.

Water use in relation to BlueScope's manufacturing sites was modelled using the specific watershed scarcity data for each BlueScope manufacturing site. For the rollforming operations, water use was modelled using the generic Australian water scarcity data for rollforming.

Cut off criteria

All relevant and available data were collected. While cut-off criteria according to the Product Category Rules (PCR) section 4.4 were employed, much of the data which would have fallen within that scope were included where available, resulting in a data set which is robust and captures all significant contributors to the LCA results. Inputs knowingly excluded are the transport and packaging of minor inputs, such as lubricants and greases, which are used in very small quantities.

Personnel is excluded as per section 4.3.1 in the PCR (EPD International, 2021). thinkstep-anz consistently excludes environmental impacts from infrastructure, construction, production equipment, and tools that are not directly consumed in the production process ('capital goods'). This is because high-quality infrastructure-related data isn't always available and there is no clear cut-off for what to include. For this reason, capital goods data may be applied to LCA studies inconsistently and could lead to reduced consistency and comparability of EPDs. Capital goods were excluded from previous EPDs, thus including capital goods in this current EPD could reduce comparability.

Allocation

Where subdivision of processes was not possible, allocation was carried out using the most relevant physical quantity, predominantly the mass of throughput (e.g. steel coil) or surface area of the coil (e.g. surface coatings). Economic allocation was applied in the study underpinning the upstream hot rolled steel manufacturing process, obtained from EPD for Steel – Hot Rolled Coil (S-P-00557) v2.0. Economic allocation was not otherwise used in this study. No use of system expansion was made (excepting Module D).

End of life

The modelling for Module C1 (deconstruction, demolition) was based on the use of a 100 kW construction excavator (fuel consumption of 0.172 kg diesel per tonne steel). The modelling for Module C2 (transport) assumed 50 km transport by truck to a waste processing facility or landfill.

The recycling scenario was based on the National Waste Report 2020²⁹, which indicates that the average metals recycling rate in Australia is 90%. This is considered to be a conservative estimate for flat steel construction products but was used in the absence of verified higher recycling rates.

End of life allocation follows the requirements of EN 15804:2012+A2:2019 section 6.4.3.3 and generally follows the polluter pays principle. Any open scrap inputs into manufacturing remain unconnected, and so are treated as 'burden free'. At the end of life of a product, scrap is collected for recycling and is thus available to produce a recycling credit within Module D. A credit for net scrap is given in Module D based on the base metal used in the product (0.740 kg of scrap per kg of product).

Key assumptions and qualifications:

- Accuracy of data measurement falls within normal industrial weighing systems accuracy limits of +/-5%.
- Transport and packaging of minor materials is insignificant to the overall impacts.
- Nominally identical products are produced on a combination of production lines in parallel, and therefore the impacts of each product are a weighted average of the various production lines. The impact of any differences in the composition of the products, with the exception of any change in base metal thickness (BMT), is insignificant on the outcomes of the LCA.
- Proprietary chemicals and paints can be sufficiently modelled using guidance from Safety Data Sheets and conservative assumptions on that basis.
- Upstream data taken from the GaBi LCI database reflects average or generic production and therefore does not correspond to BlueScope's actual suppliers.
- Rollforming data has been obtained from selected sites of several rollformers based in Australia³⁰. Some of this data has been obtained from third parties. BlueScope does not accept any responsibility for the accuracy, completeness or reliability of data provided by third parties. The rollforming results may not be representative of the final formed product from any particular rollforming operation, company or site. Actual results will vary depending on a range of factors specific to the particular operations of the downstream processors.
- The Module D recovery stage assumes that paint coatings are incinerated and metal coatings are lost as slag during the steel recycling process. This is a conservative assumption for metal coatings as they are likely to make up part of future steel alloys.

26. The term 'low carbon steel' refers to the carbon content in the metal alloy (which is typically less than 0.3% carbon content), and not to the carbon dioxide (CO₂) emissions associated with the product.

27. Results inclusive of the rollforming process are presented as 'A1-A3 incl. rollforming' in the Results section.

28. Sphera, GaBi LCA Database Documentation, 2022, <https://www.gabi-software.com/support/gabi/gabi-database-2022-lci-documentation/>

29. Pickin J et al., National Waste Report 2020, Prepared for the Department of Agriculture, Water and the Environment, 2020, p.39.

30. Including Lysaght (all sites), Metroll (Perth, Albany and Bunbury sites) and Steeline (Hunter sites).

Environmental Performance

The environmental impact indicators included in this EPD are described in the table below. All the result tables from this point will contain the abbreviations only. All results reported in MJ are in net calorific value.

Indicator	Abbreviation	Units	Characterisation Method
Core Environmental Impact indicators, in accordance to EN 15804:2012+A2:2019			
Climate change – total	GWP-total	kg CO ₂ -eq.	EF3.0 (PEF)
Climate change – fossil	GWP-fossil	kg CO ₂ -eq.	EF3.0 (PEF)
Climate change – biogenic	GWP-biogenic	kg CO ₂ -eq.	EF3.0 (PEF)
Climate change – land use and land use change	GWP-luluc	kg CO ₂ -eq.	EF3.0 (PEF)
Ozone depletion	ODP	kg CFC-11-eq.	WMO 2014
Acidification	AP	mol H ⁺ -eq.	Accumulated Exceedance
Eutrophication aquatic freshwater	EP-freshwater	kg P-eq.	EUTREND model (ReCiPe)
Eutrophication aquatic marine	EP-marine	kg N-eq.	EUTREND model (ReCiPe)
Eutrophication terrestrial	EP-terrestrial	mol N-eq.	Accumulated Exceedance
Photochemical ozone formation	POCP	kg NMVOC-eq.	LOTOS-EUROS
Depletion of abiotic resources – minerals and metals	ADP-minerals & metals	kg Sb-eq.	CML 2002a
Depletion of abiotic resources – fossil fuels	ADP-fossil	MJ	CML 2002a
Water depletion potential	WDP	m ³ world-eq. deprived	AWARE
Additional Environmental Impact indicators, in accordance to EN 15804:2012+A2:2019			
Climate change	GWP-GHG	kg CO ₂ -eq.	IPCC 2013 (AR5)
Particulate Matter emissions	PM	Disease incidence	SETAC-UNEP, Fantke et al. 2016
Ionising radiation – human health	IRP	kBq U-235-eq.	Human Health Effect model
Eco-toxicity – freshwater	ETP-fw	CTUe	Modified USEtox model from EC-JRC
Human toxicity potential – cancer effects	HTP-c	CTUh	Modified USEtox model from EC-JRC
Human toxicity potential – non-cancer effects	HTP-nc	CTUh	Modified USEtox model from EC-JRC
Land use related impacts / soil quality	SQP	dimensionless	Soil quality index (LANCA®)
Resource use parameters			
Use of renewable primary energy excluding renewable primary energy resources used as raw materials	PERE	MJ	n/a
Use of renewable primary energy resources used as raw materials	PERM	MJ	n/a
Total use of renewable primary energy resources	PERT	MJ	n/a
Use of non-renewable primary energy excluding non-renewable primary energy resources used as raw materials	PENRE	MJ	n/a
Use of non-renewable primary energy resources used as raw materials	PENRM	MJ	n/a
Total use of non-renewable primary energy resources	PENRT	MJ	n/a
Use of secondary material	SM	kg	n/a
Use of renewable secondary fuels	RSF	MJ	n/a
Use of non-renewable secondary fuels	NRSF	MJ	n/a
Net use of fresh water	FW	m ³	n/a

Indicator	Abbreviation	Units	Characterisation Method
Waste Categories and Output Flows			
Hazardous waste disposed	HWD	kg	n/a
Non-hazardous waste disposed	NHWD	kg	n/a
Radioactive waste disposed	RWD	kg	n/a
Components for re-use	CRU	kg	n/a
Materials for recycling	MFR	kg	n/a
Materials for energy recovery	MER	kg	n/a
Exported energy – electrical	EEE	MJ	n/a
Exported energy – thermal	EET	MJ	n/a
Additional Environmental Impact indicators, in accordance to EN 15804:2012+A1:2013			
Global warming potential	GWP	kg CO ₂ -eq.	IPCC 2007 (AR4)
Ozone depletion potential	ODP	kg CFC-11-eq.	WMO 2003
Acidification potential	AP	kg SO ₂ -eq.	CML 2002b
Eutrophication potential	EP	kg PO ₄ ³⁻ -eq.	CML 2002b
Photochemical ozone creation potential	POCP	kg C ₂ H ₄ -eq.	CML 2002b
Abiotic depletion potential for non-fossil resources	ADPE	kg Sb-eq.	CML 2002b
Abiotic depletion potential for fossil resources	ADPF	MJ	CML 2002b
Additional Green Star v1.3 indicators			
Human Toxicity – cancer effects	HTc - GS	CTUh	USEtox
Human Toxicity - non-cancer effects	HTnc - GS	CTUh	USEtox
Land use	LU - GS	kg C deficit-eq.	Soil Organic Matter method
Resource depletion – water	RDW - GS	m ³ -eq.	Water Stress Indicator
Ionising radiation	IR - GS	kBq U235-eq.	Human Health Effect model
Particulate matter	PM - GS	kg PM2.5-eq.	RiskPoll

Environmental Product Declaration

COLORBOND® steel

Results for 1 m² of COLORBOND® steel in 0.30mm base metal thickness (BMT)

In accordance to EN 15804:2012+A2:2019

Product mass: 2.51 kg/m² flat

Note: Results for 'A1-A3 incl. rollforming' are for one square metre (1 m²) of flat product. The profile of the rollformed roofing/cladding product will affect how many flat square metres are required to cover a given surface area.

Environmental Impacts

Indicator	Unit	A1-A3	A1-A3 incl. rollforming	C1	C2	C3	C4	D
GWP-total	kg CO ₂ -eq.	9.48	9.77	0.00157	0.0119	0.110	0.0121	-3.01
GWP-fossil	kg CO ₂ -eq.	9.49	9.84	0.00157	0.0119	0.110	0.0121	-3.02
GWP-biogenic	kg CO ₂ -eq.	-0.00653	-0.0716	1.55E-07	3.96E-06	1.23E-04	2.39E-05	0.00178
GWP-luluc	kg CO ₂ -eq.	3.59E-04	6.64E-04	1.14E-08	1.28E-07	4.23E-06	7.28E-06	-6.10E-05
ODP	kg CFC-11-eq.	5.29E-12	5.83E-12	1.24E-16	1.19E-15	4.91E-13	1.59E-14	4.93E-14
AP	mol H ⁺ -eq.	0.0335	0.0348	7.44E-06	3.06E-05	5.55E-04	3.82E-05	-0.00295
EP-freshwater	kg P-eq.	2.67E-06	3.48E-06	2.75E-10	1.95E-09	6.03E-08	9.29E-09	-5.37E-07
EP-marine	kg N-eq.	0.00747	0.00781	3.59E-06	1.38E-05	1.19E-04	9.31E-06	-2.12E-04
EP-terrestrial	mol N-eq.	0.0835	0.0871	3.94E-05	1.52E-04	0.00130	1.02E-04	2.54E-04
POCP	kg NMVOC-eq.	0.0250	0.0260	1.01E-05	2.96E-05	3.30E-04	2.95E-05	-0.00209
ADP-minerals & metals ³¹	kg Sb-eq.	2.78E-05	2.84E-05	1.91E-11	2.14E-10	9.25E-09	8.44E-10	-1.52E-07
ADP-fossil ³¹	MJ	98.2	102	0.0208	0.158	1.19	0.172	-27.3
WDP ³¹	m ³ world-eq. deprived	0.793	0.843	1.16E-05	7.51E-05	0.0431	8.21E-04	-0.579

Additional Environmental Impacts

Indicator	Unit	A1-A3	A1-A3 incl. rollforming	C1	C2	C3	C4	D
GWP-GHG ³²	kg CO ₂ -eq.	9.28	9.63	0.00155	0.0118	0.109	0.0117	-2.90
PM	Disease incidence	4.06E-07	4.21E-07	8.42E-11	2.01E-10	5.40E-09	4.09E-10	-3.27E-08
IRP ³³	kBq U-235-eq.	0.111	0.114	3.94E-08	4.00E-06	2.08E-05	3.05E-04	0.0710
ETP-fw ³¹	CTUe	21.0	22.1	0.00522	0.0632	0.228	0.0509	-0.871
HTP-c ³¹	CTUh	1.80E-09	1.87E-09	8.76E-14	1.07E-12	1.02E-11	6.04E-12	-1.27E-09
HTP-nc ³¹	CTUh	2.17E-07	2.24E-07	5.47E-12	4.23E-11	3.40E-10	6.08E-10	-4.14E-08
SQP ³¹	dimensionless	4.00	6.33	4.77E-05	4.44E-04	0.152	0.0133	0.370

Resource use

Parameter	Unit	A1-A3	A1-A3 incl. rollforming	C1	C2	C3	C4	D
PERE	MJ	6.84	7.80	6.79E-05	7.70E-04	0.256	0.0140	1.85
PERM	MJ	0	0	0	0	0	0	0
PERT	MJ	6.84	7.80	6.79E-05	7.70E-04	0.256	0.0140	1.85
PENRE	MJ	97.8	102	0.0208	0.158	1.19	0.172	-27.3
PENRM	MJ	0.418	0.426	0	0	0	0	0
PENRT	MJ	98.2	102	0.0208	0.158	1.19	0.172	-27.3
SM	kg	0.366	0.373	0	0	0	0	0
RSF	MJ	0	0	0	0	0	0	0
NRSF	MJ	0	0	0	0	0	0	0
FW	m ³	0.0203	0.0213	1.75E-07	1.50E-06	6.06E-04	2.42E-05	-0.0131

Waste Categories and Output Flows

Parameter	Unit	A1-A3	A1-A3 incl. rollforming	C1	C2	C3	C4	D
HWD	kg	3.18E-09	8.03E-09	2.25E-14	2.56E-13	3.98E-11	2.59E-11	-2.06E-10
NHWD	kg	0.223	0.232	2.97E-07	3.82E-06	3.72E-04	0.251	0.515
RWD	kg	6.27E-04	6.45E-04	3.04E-10	3.08E-08	1.63E-07	2.07E-06	5.59E-06
CRU	kg	0	0	0	0	0	0	0
MFR	kg	1.05	1.07	0	0	2.26	0	0
MER	kg	0.00299	0.00305	0	0	0	0	0
EEE	MJ	0	0	0	0	0	0	0
EET	MJ	0	0	0	0	0	0	0

End of Life

Parameter	Unit	Total
Steel collected separately	kg	2.26
Steel collected with mixed construction waste	kg	0.251
Recovery for re-use	kg	0
Recovery for recycling	kg	2.26
Recovery for energy recovery	kg	0
Disposal to landfill	kg	0.251
Assumptions for scenario	-	n/a

Biogenic Carbon Content

	Unit	A1-A3	A1-A3 incl. rollforming
Biogenic carbon content in product	kg C	0	0
Biogenic carbon content in packaging	kg C	0.00306	0.0240

Note: 1 kg biogenic carbon is equivalent to 44/12 kg CO₂

Additional Results for 1 m² of COLORBOND® steel in 0.30mm base metal thickness (BMT)

In accordance to EN 15804:2012+A1:2013

Environmental Impacts

Indicator	Unit	A1-A3	A1-A3 incl. rollforming	C1	C2	C3	C4	D
GWP	kg CO ₂ -eq.	9.21	9.49	0.00154	0.0117	0.109	0.0115	-2.87
ODP	kg CFC11-eq.	6.24E-12	6.91E-12	1.46E-16	1.40E-15	5.78E-13	1.87E-14	5.70E-14
AP	kg SO ₂ -eq.	0.0270	0.0281	5.17E-06	2.16E-05	4.53E-04	3.07E-05	-0.00271
EP	kg PO ₄ ³⁻ -eq.	0.00267	0.00280	1.20E-06	4.69E-06	4.09E-05	3.27E-06	-7.13E-05
POCP	kg ethene-eq.	0.00398	0.00410	5.10E-07	-5.73E-06	2.43E-05	2.86E-06	-0.00129
ADPE	kg Sb-eq.	2.78E-05	2.84E-05	1.91E-11	2.14E-10	9.25E-09	8.57E-10	-1.47E-07
ADPF	MJ	95.8	99.7	0.0208	0.157	1.19	0.166	-28.1

Additional Green Star v1.3 Indicators

Indicator	Unit	A1-A3	A1-A3 incl. rollforming	C1	C2	C3	C4	D
HTc - GS	CTUh	2.51E-10	2.63E-10	2.37E-15	3.27E-14	3.95E-12	5.28E-13	5.32E-11
HTnc - GS	CTUh	8.16E-11	2.72E-10	1.13E-15	7.36E-15	1.26E-13	1.23E-14	1.48E-12
LU - GS	kg C deficit-eq.	1.37	1.52	3.94E-06	3.05E-05	0.0124	0.00116	0.154
RDW - GS	m ³ -eq.	0.00899	0.00959	1.13E-07	9.54E-07	4.03E-04	1.22E-05	-0.00716
IR - GS	kBq U235-eq.	0.110	0.113	3.94E-08	4.00E-06	2.08E-05	3.05E-04	0.0710
PM - GS	kg PM2.5-eq.	0.00213	0.00221	3.71E-07	1.01E-06	2.97E-05	2.16E-06	-2.12E-04

31. The results of this environmental impact indicator shall be used with care as the uncertainties on these results are high or as there is limited experience with the indicator.

32. This indicator includes all greenhouse gases included in GWP-total but excludes biogenic carbon dioxide emissions and uptake and biogenic carbon stored in the product as defined by the IPCC AR5 report (IPCC 2013). As this indicator uses the same characterisation factors as the GWP indicator required in v3.01 of the General Programme Instructions (GPI) of the International EPD® System, its inclusion creates comparability with EPDs based on other Product Category Rules (PCRs) aligned with v3.01 of the GPI, as well as comparability with other GHG reporting according ISO 14067.

33. This impact category deals mainly with the eventual impact of low dose ionizing radiation on human health of the nuclear fuel cycle. It does not consider effects due to possible nuclear accidents, occupational exposure nor due to radioactive waste disposal in underground facilities. Potential ionizing radiation from the soil, from radon and some construction materials, is also not measured by this indicator.

Environmental Product Declaration

COLORBOND® steel

Results for 1 m² of COLORBOND® steel in 0.35mm base metal thickness (BMT)

In accordance to EN 15804:2012+A2:2019

Product mass: 2.91 kg/m² flat

Note: Results for 'A1-A3 incl. rollforming' are for one square metre (1 m²) of flat product. The profile of the rollformed roofing/cladding product will affect how many flat square metres are required to cover a given surface area.

Environmental Impacts

Indicator	Unit	A1-A3	A1-A3 incl. rollforming	C1	C2	C3	C4	D
GWP-total	kg CO ₂ -eq.	10.5	10.8	0.00181	0.0138	0.128	0.0141	-3.48
GWP-fossil	kg CO ₂ -eq.	10.5	10.9	0.00181	0.0137	0.128	0.0140	-3.48
GWP-biogenic	kg CO ₂ -eq.	-0.00621	-0.0814	1.79E-07	4.58E-06	1.43E-04	2.76E-05	0.00204
GWP-luluc	kg CO ₂ -eq.	3.74E-04	7.26E-04	1.31E-08	1.48E-07	4.90E-06	8.43E-06	-7.07E-05
ODP	kg CFC-11-eq.	5.64E-12	6.25E-12	1.44E-16	1.38E-15	5.68E-13	1.84E-14	5.58E-14
AP	mol H ⁺ -eq.	0.0369	0.0384	8.61E-06	3.55E-05	6.42E-04	4.42E-05	-0.00343
EP-freshwater	kg P-eq.	2.82E-06	3.75E-06	3.18E-10	2.26E-09	6.97E-08	1.07E-08	-6.21E-07
EP-marine	kg N-eq.	0.00821	0.00860	4.16E-06	1.60E-05	1.37E-04	1.08E-05	-2.52E-04
EP-terrestrial	mol N-eq.	0.0920	0.0961	4.55E-05	1.76E-04	0.00150	1.18E-04	2.20E-04
POCP	kg NMVOC-eq.	0.0276	0.0288	1.16E-05	3.42E-05	3.81E-04	3.41E-05	-0.00243
ADP-minerals & metals ³⁴	kg Sb-eq.	2.79E-05	2.84E-05	2.21E-11	2.48E-10	1.07E-08	9.77E-10	-1.76E-07
ADP-fossil ³⁴	MJ	108	113	0.0240	0.182	1.38	0.199	-31.5
WDP ³⁴	m ³ world-eq. deprived	0.838	0.894	1.34E-05	8.69E-05	0.0499	9.50E-04	-0.669

Additional Environmental Impacts

Indicator	Unit	A1-A3	A1-A3 incl. rollforming	C1	C2	C3	C4	D
GWP-GHG ³⁵	kg CO ₂ -eq.	10.3	10.7	0.00179	0.0136	0.127	0.0136	-3.35
PM	Disease incidence	4.51E-07	4.68E-07	9.74E-11	2.32E-10	6.25E-09	4.73E-10	-3.82E-08
IRP ³⁶	kBq U-235-eq.	0.113	0.115	4.56E-08	4.63E-06	2.41E-05	3.53E-04	0.0819
ETP-fw ³⁴	CTUe	22.3	23.5	0.00604	0.0731	0.263	0.0589	-1.01
HTP-c ³⁴	CTUh	1.88E-09	1.96E-09	1.01E-13	1.23E-12	1.18E-11	6.98E-12	-1.46E-09
HTP-nc ³⁴	CTUh	2.38E-07	2.45E-07	6.33E-12	4.90E-11	3.93E-10	7.04E-10	-4.78E-08
SQP ³⁴	dimensionless	4.24	6.93	5.52E-05	5.14E-04	0.176	0.0154	0.426

Resource use

Parameter	Unit	A1-A3	A1-A3 incl. rollforming	C1	C2	C3	C4	D
PERE	MJ	7.10	8.20	7.85E-05	8.91E-04	0.297	0.0162	2.14
PERM	MJ	0	0	0	0	0	0	0
PERT	MJ	7.10	8.20	7.85E-05	8.91E-04	0.297	0.0162	2.14
PENRE	MJ	108	112	0.0240	0.182	1.38	0.199	-31.5
PENRM	MJ	0.418	0.426	0	0	0	0	0
PENRT	MJ	108	113	0.0240	0.182	1.38	0.199	-31.5
SM	kg	0.442	0.450	0	0	0	0	0
RSF	MJ	0	0	0	0	0	0	0
NRSF	MJ	0	0	0	0	0	0	0
FW	m ³	0.0211	0.0223	2.02E-07	1.74E-06	7.01E-04	2.80E-05	-0.0151

Waste Categories and Output Flows

Parameter	Unit	A1-A3	A1-A3 incl. rollforming	C1	C2	C3	C4	D
HWD	kg	3.36E-09	8.96E-09	2.61E-14	2.96E-13	4.61E-11	3.00E-11	-2.39E-10
NHWD	kg	0.226	0.237	3.43E-07	4.42E-06	4.30E-04	0.290	0.583
RWD	kg	6.36E-04	6.55E-04	3.52E-10	3.56E-08	1.88E-07	2.39E-06	6.34E-06
CRU	kg	0	0	0	0	0	0	0
MFR	kg	1.22	1.24	0	0	2.61	0	0
MER	kg	0.00299	0.00305	0	0	0	0	0
EEE	MJ	0	0	0	0	0	0	0
EET	MJ	0	0	0	0	0	0	0

End of Life

Parameter	Unit	Total
Steel collected separately	kg	2.61
Steel collected with mixed construction waste	kg	0.291
Recovery for re-use	kg	0
Recovery for recycling	kg	2.61
Recovery for energy recovery	kg	0
Disposal to landfill	kg	0.291
Assumptions for scenario	-	n/a

Biogenic Carbon Content

	Unit	A1-A3	A1-A3 incl. rollforming
Biogenic carbon content in product	kg C	0	0
Biogenic carbon content in packaging	kg C	0.00306	0.0273

Note: 1 kg biogenic carbon is equivalent to 44/12 kg CO₂

Additional Results for 1 m² of COLORBOND® steel in 0.35mm base metal thickness (BMT)

In accordance to EN 15804:2012+A1:2013

Environmental Impacts

Indicator	Unit	A1-A3	A1-A3 incl. rollforming	C1	C2	C3	C4	D
GWP	kg CO ₂ -eq.	10.2	10.5	0.00178	0.0136	0.126	0.0133	-3.31
ODP	kg CFC11-eq.	6.65E-12	7.41E-12	1.69E-16	1.62E-15	6.68E-13	2.17E-14	6.44E-14
AP	kg SO ₂ -eq.	0.0298	0.0309	5.98E-06	2.50E-05	5.25E-04	3.55E-05	-0.00314
EP	kg PO ₄ ³⁻ -eq.	0.00294	0.00309	1.39E-06	5.43E-06	4.73E-05	3.78E-06	-8.45E-05
POCP	kg ethene-eq.	0.00445	0.00458	5.90E-07	-6.63E-06	2.81E-05	3.31E-06	-0.00149
ADPE	kg Sb-eq.	2.79E-05	2.84E-05	2.21E-11	2.48E-10	1.07E-08	9.92E-10	-1.70E-07
ADPF	MJ	106	110	0.0240	0.182	1.37	0.192	-32.4

Additional Green Star v1.3 Indicators

Indicator	Unit	A1-A3	A1-A3 incl. rollforming	C1	C2	C3	C4	D
HTc - GS	CTUh	2.58E-10	2.72E-10	2.75E-15	3.78E-14	4.57E-12	6.11E-13	6.13E-11
HTnc - GS	CTUh	8.58E-11	3.05E-10	1.31E-15	8.51E-15	1.46E-13	1.42E-14	1.71E-12
LU - GS	kg C deficit-eq.	1.48	1.65	4.56E-06	3.52E-05	0.0143	0.00135	0.178
RDW - GS	m ³ -eq.	0.00948	0.0101	1.30E-07	1.10E-06	4.66E-04	1.41E-05	-0.00826
IR - GS	kBq U235-eq.	0.112	0.115	4.56E-08	4.63E-06	2.41E-05	3.53E-04	0.0819
PM - GS	kg PM2.5-eq.	0.00237	0.00245	4.29E-07	1.17E-06	3.44E-05	2.50E-06	-2.47E-04

34. The results of this environmental impact indicator shall be used with care as the uncertainties on these results are high or as there is limited experience with the indicator.

35. This indicator includes all greenhouse gases included in GWP-total but excludes biogenic carbon dioxide emissions and uptake and biogenic carbon stored in the product as defined by the IPCC AR5 report (IPCC 2013). As this indicator uses the same characterisation factors as the GWP indicator required in v3.01 of the General Programme Instructions (GPI) of the International EPD® System, its inclusion creates comparability with EPDs based on other Product Category Rules (PCRs) aligned with v3.01 of the GPI, as well as comparability with other GHG reporting according ISO 14067.

36. This impact category deals mainly with the eventual impact of low dose ionizing radiation on human health of the nuclear fuel cycle. It does not consider effects due to possible nuclear accidents, occupational exposure nor due to radioactive waste disposal in underground facilities. Potential ionizing radiation from the soil, from radon and some construction materials, is also not measured by this indicator.

Environmental Product Declaration

COLORBOND® steel

Results for 1 m² of COLORBOND® steel in 0.40mm base metal thickness (BMT)

In accordance to EN 15804:2012+A2:2019

Product mass: 3.30 kg/m² flat

Note: Results for 'A1-A3 incl. rollforming' are for one square metre (1 m²) of flat product. The profile of the rollformed roofing/cladding product will affect how many flat square metres are required to cover a given surface area.

Environmental Impacts

Indicator	Unit	A1-A3	A1-A3 incl. rollforming	C1	C2	C3	C4	D
GWP-total	kg CO ₂ -eq.	11.5	11.9	0.00206	0.0156	0.145	0.0160	-3.94
GWP-fossil	kg CO ₂ -eq.	11.5	12.0	0.00206	0.0156	0.145	0.0159	-3.95
GWP-biogenic	kg CO ₂ -eq.	-0.00590	-0.0912	2.04E-07	5.20E-06	1.62E-04	3.14E-05	0.00230
GWP-luluc	kg CO ₂ -eq.	3.89E-04	7.88E-04	1.49E-08	1.68E-07	5.56E-06	9.57E-06	-8.05E-05
ODP	kg CFC-11-eq.	5.98E-12	6.68E-12	1.63E-16	1.57E-15	6.45E-13	2.09E-14	6.22E-14
AP	mol H ⁺ -eq.	0.0403	0.0419	9.77E-06	4.03E-05	7.29E-04	5.02E-05	-0.00390
EP-freshwater	kg P-eq.	2.97E-06	4.03E-06	3.61E-10	2.57E-09	7.92E-08	1.22E-08	-7.04E-07
EP-marine	kg N-eq.	0.00896	0.00939	4.72E-06	1.82E-05	1.56E-04	1.22E-05	-2.91E-04
EP-terrestrial	mol N-eq.	0.100	0.105	5.17E-05	2.00E-04	0.00170	1.34E-04	1.86E-04
POCP	kg NMVOC-eq.	0.0302	0.0315	1.32E-05	3.89E-05	4.33E-04	3.87E-05	-0.00277
ADP-minerals & metals ³⁷	kg Sb-eq.	2.79E-05	2.85E-05	2.51E-11	2.81E-10	1.22E-08	1.11E-09	-1.99E-07
ADP-fossil ³⁷	MJ	118	123	0.0273	0.207	1.57	0.226	-35.7
WDP ³⁷	m ³ world-eq. deprived	0.883	0.945	1.53E-05	9.87E-05	0.0567	0.00108	-0.758

Additional Environmental Impacts

Indicator	Unit	A1-A3	A1-A3 incl. rollforming	C1	C2	C3	C4	D
GWP-GHG ³⁸	kg CO ₂ -eq.	11.3	11.7	0.00204	0.0155	0.144	0.0154	-3.80
PM	Disease incidence	4.96E-07	5.15E-07	1.11E-10	2.64E-10	7.10E-09	5.37E-10	-4.36E-08
IRP ³⁹	kBq U-235-eq.	0.114	0.117	5.18E-08	5.26E-06	2.74E-05	4.01E-04	0.0928
ETP-fw ³⁷	CTUe	23.5	24.9	0.00686	0.0830	0.299	0.0669	-1.16
HTP-c ³⁷	CTUh	1.96E-09	2.04E-09	1.15E-13	1.40E-12	1.34E-11	7.93E-12	-1.65E-09
HTP-nc ³⁷	CTUh	2.59E-07	2.67E-07	7.19E-12	5.56E-11	4.46E-10	7.99E-10	-5.42E-08
SQP ³⁷	dimensionless	4.49	7.54	6.27E-05	5.84E-04	0.200	0.0175	0.482

Resource use

Parameter	Unit	A1-A3	A1-A3 incl. rollforming	C1	C2	C3	C4	D
PERE	MJ	7.36	8.59	8.92E-05	0.00101	0.337	0.0184	2.42
PERM	MJ	0	0	0	0	0	0	0
PERT	MJ	7.36	8.59	8.92E-05	0.00101	0.337	0.0184	2.42
PENRE	MJ	117	122	0.0273	0.207	1.57	0.226	-35.7
PENRM	MJ	0.418	0.426	0	0	0	0	0
PENRT	MJ	118	123	0.0273	0.207	1.57	0.226	-35.7
SM	kg	0.518	0.528	0	0	0	0	0
RSF	MJ	0	0	0	0	0	0	0
NRSF	MJ	0	0	0	0	0	0	0
FW	m ³	0.0219	0.0232	2.30E-07	1.97E-06	7.97E-04	3.18E-05	-0.0172

Waste Categories and Output Flows

Parameter	Unit	A1-A3	A1-A3 incl. rollforming	C1	C2	C3	C4	D
HWD	kg	3.53E-09	9.89E-09	2.96E-14	3.36E-13	5.23E-11	3.41E-11	-2.72E-10
NHWD	kg	0.230	0.241	3.90E-07	5.02E-06	4.89E-04	0.330	0.650
RWD	kg	6.45E-04	6.65E-04	4.00E-10	4.04E-08	2.14E-07	2.72E-06	7.09E-06
CRU	kg	0	0	0	0	0	0	0
MFR	kg	1.38	1.41	0	0	2.96	0	0
MER	kg	0.00299	0.00305	0	0	0	0	0
EEE	MJ	0	0	0	0	0	0	0
EET	MJ	0	0	0	0	0	0	0

End of Life

Parameter	Unit	Total
Steel collected separately	kg	2.96
Steel collected with mixed construction waste	kg	0.330
Recovery for re-use	kg	0
Recovery for recycling	kg	2.96
Recovery for energy recovery	kg	0
Disposal to landfill	kg	0.330
Assumptions for scenario	-	n/a

Biogenic Carbon Content

	Unit	A1-A3	A1-A3 incl. rollforming
Biogenic carbon content in product	kg C	0	0
Biogenic carbon content in packaging	kg C	0.00306	0.0305

Note: 1 kg biogenic carbon is equivalent to 44/12 kg CO₂

Additional Results for 1 m² of COLORBOND® steel in 0.40mm base metal thickness (BMT)

In accordance to EN 15804:2012+A1:2013

Environmental Impacts

Indicator	Unit	A1-A3	A1-A3 incl. rollforming	C1	C2	C3	C4	D
GWP	kg CO ₂ -eq.	11.2	11.6	0.00203	0.0154	0.143	0.0151	-3.75
ODP	kg CFC11-eq.	7.06E-12	7.92E-12	1.92E-16	1.84E-15	7.59E-13	2.46E-14	7.19E-14
AP	kg SO ₂ -eq.	0.0325	0.0338	6.79E-06	2.83E-05	5.96E-04	4.03E-05	-0.00358
EP	kg PO ₄ ³⁻ -eq.	0.00321	0.00338	1.58E-06	6.16E-06	5.37E-05	4.30E-06	-9.77E-05
POCP	kg ethene-eq.	0.00492	0.00506	6.70E-07	-7.53E-06	3.19E-05	3.76E-06	-0.00169
ADPE	kg Sb-eq.	2.79E-05	2.85E-05	2.51E-11	2.81E-10	1.22E-08	1.13E-09	-1.92E-07
ADPF	MJ	115	120	0.0273	0.207	1.56	0.218	-36.7

Additional Green Star v1.3 Indicators

Indicator	Unit	A1-A3	A1-A3 incl. rollforming	C1	C2	C3	C4	D
HTc - GS	CTUh	2.65E-10	2.80E-10	3.12E-15	4.30E-14	5.19E-12	6.94E-13	6.94E-11
HTnc - GS	CTUh	8.99E-11	3.39E-10	1.49E-15	9.67E-15	1.65E-13	1.61E-14	1.93E-12
LU - GS	kg C deficit-eq.	1.59	1.78	5.17E-06	4.00E-05	0.0163	0.00153	0.202
RDW - GS	m ³ -eq.	0.00996	0.0107	1.48E-07	1.25E-06	5.29E-04	1.60E-05	-0.00936
IR - GS	kBq U235-eq.	0.114	0.116	5.18E-08	5.26E-06	2.74E-05	4.01E-04	0.0928
PM - GS	kg PM2.5-eq.	0.00260	0.00270	4.88E-07	1.33E-06	3.91E-05	2.84E-06	-2.81E-04

37. The results of this environmental impact indicator shall be used with care as the uncertainties on these results are high or as there is limited experience with the indicator.

38. This indicator includes all greenhouse gases included in GWP-total but excludes biogenic carbon dioxide emissions and uptake and biogenic carbon stored in the product as defined by the IPCC AR5 report (IPCC 2013). As this indicator uses the same characterisation factors as the GWP indicator required in v3.01 of the General Programme Instructions (GPI) of the International EPD® System, its inclusion creates comparability with EPDs based on other Product Category Rules (PCRs) aligned with v3.01 of the GPI, as well as comparability with other GHG reporting according ISO 14067.

39. This impact category deals mainly with the eventual impact of low dose ionizing radiation on human health of the nuclear fuel cycle. It does not consider effects due to possible nuclear accidents, occupational exposure nor due to radioactive waste disposal in underground facilities. Potential ionizing radiation from the soil, from radon and some construction materials, is also not measured by this indicator.

Environmental Product Declaration

COLORBOND® steel

Results for 1 m² of COLORBOND® steel in 0.42mm base metal thickness (BMT)

In accordance to EN 15804:2012+A2:2019

Product mass: 3.46 kg/m² flat

Note: Results for 'A1-A3 incl. rollforming' are for one square metre (1 m²) of flat product. The profile of the rollformed roofing/cladding product will affect how many flat square metres are required to cover a given surface area.

Environmental Impacts

Indicator	Unit	A1-A3	A1-A3 incl. rollforming	C1	C2	C3	C4	D
GWP-total	kg CO ₂ -eq.	12.0	12.3	0.00216	0.0164	0.152	0.0167	-4.13
GWP-fossil	kg CO ₂ -eq.	12.0	12.4	0.00216	0.0164	0.152	0.0167	-4.13
GWP-biogenic	kg CO ₂ -eq.	-0.00578	-0.0952	2.13E-07	5.45E-06	1.70E-04	3.29E-05	0.00241
GWP-luluc	kg CO ₂ -eq.	3.95E-04	8.13E-04	1.56E-08	1.76E-07	5.83E-06	1.00E-05	-8.44E-05
ODP	kg CFC-11-eq.	6.12E-12	6.85E-12	1.71E-16	1.64E-15	6.76E-13	2.19E-14	6.48E-14
AP	mol H ⁺ -eq.	0.0416	0.0434	1.02E-05	4.22E-05	7.64E-04	5.26E-05	-0.00410
EP-freshwater	kg P-eq.	3.03E-06	4.13E-06	3.79E-10	2.69E-09	8.30E-08	1.28E-08	-7.37E-07
EP-marine	kg N-eq.	0.00926	0.00971	4.95E-06	1.91E-05	1.64E-04	1.28E-05	-3.07E-04
EP-terrestrial	mol N-eq.	0.104	0.109	5.42E-05	2.10E-04	0.00179	1.41E-04	1.72E-04
POCP	kg NMVOC-eq.	0.0312	0.0326	1.39E-05	4.07E-05	4.54E-04	4.06E-05	-0.00291
ADP-minerals & metals ⁴⁰	kg Sb-eq.	2.79E-05	2.85E-05	2.63E-11	2.95E-10	1.27E-08	1.16E-09	-2.08E-07
ADP-fossil ⁴⁰	MJ	122	127	0.0286	0.217	1.64	0.236	-37.4
WDP ⁴⁰	m ³ world-eq. deprived	0.901	0.965	1.60E-05	1.03E-04	0.0594	0.00113	-0.793

Additional Environmental Impacts

Indicator	Unit	A1-A3	A1-A3 incl. rollforming	C1	C2	C3	C4	D
GWP-GHG ⁴¹	kg CO ₂ -eq.	11.7	12.1	0.00213	0.0162	0.151	0.0162	-3.98
PM	Disease incidence	5.14E-07	5.33E-07	1.16E-10	2.77E-10	7.44E-09	5.63E-10	-4.58E-08
IRP ⁴²	kBq U-235-eq.	0.115	0.118	5.43E-08	5.51E-06	2.87E-05	4.21E-04	0.0972
ETP-fw ⁴⁰	CTUe	24.0	25.4	0.00719	0.0870	0.313	0.0701	-1.21
HTP-c ⁴⁰	CTUh	1.99E-09	2.08E-09	1.21E-13	1.47E-12	1.40E-11	8.31E-12	-1.73E-09
HTP-nc ⁴⁰	CTUh	2.67E-07	2.76E-07	7.53E-12	5.83E-11	4.68E-10	8.37E-10	-5.68E-08
SQP ⁴⁰	dimensionless	4.59	7.78	6.57E-05	6.12E-04	0.210	0.0184	0.505

Resource use

Parameter	Unit	A1-A3	A1-A3 incl. rollforming	C1	C2	C3	C4	D
PERE	MJ	7.46	8.75	9.34E-05	0.00106	0.353	0.0193	2.53
PERM	MJ	0	0	0	0	0	0	0
PERT	MJ	7.46	8.75	9.34E-05	0.00106	0.353	0.0193	2.53
PENRE	MJ	121	127	0.0286	0.217	1.64	0.237	-37.4
PENRM	MJ	0.418	0.426	0	0	0	0	0
PENRT	MJ	122	127	0.0286	0.217	1.64	0.237	-37.4
SM	kg	0.548	0.559	0	0	0	0	0
RSF	MJ	0	0	0	0	0	0	0
NRSF	MJ	0	0	0	0	0	0	0
FW	m ³	0.0222	0.0236	2.41E-07	2.07E-06	8.35E-04	3.33E-05	-0.0180

Waste Categories and Output Flows

Parameter	Unit	A1-A3	A1-A3 incl. rollforming	C1	C2	C3	C4	D
HWD	kg	3.60E-09	1.03E-08	3.10E-14	3.52E-13	5.48E-11	3.57E-11	-2.85E-10
NHWD	kg	0.231	0.243	4.09E-07	5.26E-06	5.12E-04	0.346	0.677
RWD	kg	6.49E-04	6.69E-04	4.19E-10	4.24E-08	2.24E-07	2.85E-06	7.39E-06
CRU	kg	0	0	0	0	0	0	0
MFR	kg	1.45	1.48	0	0	3.11	0	0
MER	kg	0.00299	0.00305	0	0	0	0	0
EEE	MJ	0	0	0	0	0	0	0
EET	MJ	0	0	0	0	0	0	0

End of Life

Parameter	Unit	Total
Steel collected separately	kg	3.11
Steel collected with mixed construction waste	kg	0.346
Recovery for re-use	kg	0
Recovery for recycling	kg	3.11
Recovery for energy recovery	kg	0
Disposal to landfill	kg	0.346
Assumptions for scenario	-	n/a

Biogenic Carbon Content

	Unit	A1-A3	A1-A3 incl. rollforming
Biogenic carbon content in product	kg C	0	0
Biogenic carbon content in packaging	kg C	0.00306	0.0318

Note: 1 kg biogenic carbon is equivalent to 44/12 kg CO₂

Additional Results for 1 m² of COLORBOND® steel in 0.42mm base metal thickness (BMT)

In accordance to EN 15804:2012+A1:2013

Environmental Impacts

Indicator	Unit	A1-A3	A1-A3 incl. rollforming	C1	C2	C3	C4	D
GWP	kg CO ₂ -eq.	11.6	12.0	0.00212	0.0161	0.150	0.0158	-3.93
ODP	kg CFC11-eq.	7.22E-12	8.12E-12	2.02E-16	1.93E-15	7.95E-13	2.58E-14	7.48E-14
AP	kg SO ₂ -eq.	0.0336	0.0349	7.12E-06	2.97E-05	6.24E-04	4.22E-05	-0.00375
EP	kg PO ₄ ³⁻ -eq.	0.00332	0.00349	1.66E-06	6.46E-06	5.63E-05	4.50E-06	-1.03E-04
POCP	kg ethene-eq.	0.00510	0.00526	7.02E-07	-7.89E-06	3.34E-05	3.94E-06	-0.00177
ADPE	kg Sb-eq.	2.79E-05	2.85E-05	2.63E-11	2.95E-10	1.27E-08	1.18E-09	-2.01E-07
ADPF	MJ	119	124	0.0286	0.216	1.63	0.228	-38.4

Additional Green Star v1.3 Indicators

Indicator	Unit	A1-A3	A1-A3 incl. rollforming	C1	C2	C3	C4	D
HTc - GS	CTUh	2.67E-10	2.83E-10	3.27E-15	4.50E-14	5.44E-12	7.27E-13	7.27E-11
HTnc - GS	CTUh	9.15E-11	3.53E-10	1.56E-15	1.01E-14	1.73E-13	1.69E-14	2.02E-12
LU - GS	kg C deficit-eq.	1.64	1.83	5.42E-06	4.19E-05	0.0171	0.00160	0.211
RDW - GS	m ³ -eq.	0.0102	0.0109	1.55E-07	1.31E-06	5.55E-04	1.67E-05	-0.00980
IR - GS	kBq U235-eq.	0.114	0.117	5.43E-08	5.51E-06	2.87E-05	4.21E-04	0.0971
PM - GS	kg PM2.5-eq.	0.00269	0.00279	5.11E-07	1.39E-06	4.09E-05	2.97E-06	-2.95E-04

⁴⁰ The results of this environmental impact indicator shall be used with care as the uncertainties on these results are high or as there is limited experience with the indicator.

⁴¹ This indicator includes all greenhouse gases included in GWP-total but excludes biogenic carbon dioxide emissions and uptake and biogenic carbon stored in the product as defined by the IPCC AR5 report (IPCC 2013). As this indicator uses the same characterisation factors as the GWP indicator required in v3.01 of the General Programme Instructions (GPI) of the International EPD® System, its inclusion creates comparability with EPDs based on other Product Category Rules (PCRs) aligned with v3.01 of the GPI, as well as comparability with other GHG reporting according ISO 14067.

⁴² This impact category deals mainly with the eventual impact of low dose ionizing radiation on human health of the nuclear fuel cycle. It does not consider effects due to possible nuclear accidents, occupational exposure nor due to radioactive waste disposal in underground facilities. Potential ionizing radiation from the soil, from radon and some construction materials, is also not measured by this indicator.

Environmental Product Declaration

COLORBOND® steel

Results for 1 m² of COLORBOND® steel in 0.45mm base metal thickness (BMT)

In accordance to EN 15804:2012+A2:2019

Product mass: 3.69 kg/m² flat

Note: Results for 'A1-A3 incl. rollforming' are for one square metre (1 m²) of flat product. The profile of the rollformed roofing/cladding product will affect how many flat square metres are required to cover a given surface area.

Environmental Impacts

Indicator	Unit	A1-A3	A1-A3 incl. rollforming	C1	C2	C3	C4	D
GWP-total	kg CO ₂ -eq.	12.6	13.0	0.00230	0.0175	0.162	0.0179	-4.41
GWP-fossil	kg CO ₂ -eq.	12.6	13.1	0.00230	0.0175	0.162	0.0178	-4.41
GWP-biogenic	kg CO ₂ -eq.	-0.00559	-0.101	2.28E-07	5.83E-06	1.81E-04	3.52E-05	0.00257
GWP-luluc	kg CO ₂ -eq.	4.04E-04	8.50E-04	1.67E-08	1.88E-07	6.23E-06	1.07E-05	-9.02E-05
ODP	kg CFC-11-eq.	6.33E-12	7.10E-12	1.83E-16	1.75E-15	7.22E-13	2.34E-14	6.87E-14
AP	mol H ⁺ -eq.	0.0437	0.0455	1.09E-05	4.51E-05	8.16E-04	5.62E-05	-0.00438
EP-freshwater	kg P-eq.	3.12E-06	4.30E-06	4.05E-10	2.87E-09	8.87E-08	1.37E-08	-7.87E-07
EP-marine	kg N-eq.	0.00971	0.0102	5.29E-06	2.04E-05	1.75E-04	1.37E-05	-3.30E-04
EP-terrestrial	mol N-eq.	0.109	0.114	5.79E-05	2.24E-04	0.00191	1.50E-04	1.52E-04
POCP	kg NMVOC-eq.	0.0327	0.0342	1.48E-05	4.35E-05	4.85E-04	4.33E-05	-0.00311
ADP-minerals & metals ⁴³	kg Sb-eq.	2.80E-05	2.85E-05	2.81E-11	3.15E-10	1.36E-08	1.24E-09	-2.22E-07
ADP-fossil ⁴³	MJ	128	133	0.0306	0.232	1.75	0.253	-40.0
WDP ⁴³	m ³ world-eq. deprived	0.928	0.995	1.71E-05	1.11E-04	0.0634	0.00121	-0.847

Additional Environmental Impacts

Indicator	Unit	A1-A3	A1-A3 incl. rollforming	C1	C2	C3	C4	D
GWP-GHG ⁴⁴	kg CO ₂ -eq.	12.3	12.8	0.00228	0.0173	0.161	0.0173	-4.24
PM	Disease incidence	5.41E-07	5.62E-07	1.24E-10	2.95E-10	7.95E-09	6.01E-10	-4.91E-08
IRP ⁴⁵	kBq U-235-eq.	0.116	0.119	5.80E-08	5.88E-06	3.07E-05	4.49E-04	0.104
ETP-fw ⁴³	CTUe	24.7	26.2	0.00768	0.0929	0.335	0.0749	-1.30
HTP-c ⁴³	CTUh	2.04E-09	2.13E-09	1.29E-13	1.57E-12	1.50E-11	8.88E-12	-1.85E-09
HTP-nc ⁴³	CTUh	2.80E-07	2.89E-07	8.05E-12	6.23E-11	5.00E-10	8.95E-10	-6.06E-08
SQP ⁴³	dimensionless	4.73	8.14	7.02E-05	6.54E-04	0.224	0.0196	0.538

Resource use

Parameter	Unit	A1-A3	A1-A3 incl. rollforming	C1	C2	C3	C4	D
PERE	MJ	7.62	8.99	9.98E-05	0.00113	0.377	0.0206	2.70
PERM	MJ	0	0	0	0	0	0	0
PERT	MJ	7.62	8.99	9.98E-05	0.00113	0.377	0.0206	2.70
PENRE	MJ	127	133	0.0306	0.232	1.75	0.253	-40.0
PENRM	MJ	0.418	0.426	0	0	0	0	0
PENRT	MJ	128	133	0.0306	0.232	1.75	0.253	-40.0
SM	kg	0.594	0.605	0	0	0	0	0
RSF	MJ	0	0	0	0	0	0	0
NRSF	MJ	0	0	0	0	0	0	0
FW	m ³	0.0227	0.0242	2.57E-07	2.21E-06	8.92E-04	3.56E-05	-0.0192

Waste Categories and Output Flows

Parameter	Unit	A1-A3	A1-A3 incl. rollforming	C1	C2	C3	C4	D
HWD	kg	3.71E-09	1.08E-08	3.32E-14	3.76E-13	5.86E-11	3.82E-11	-3.05E-10
NHWD	kg	0.234	0.246	4.37E-07	5.62E-06	5.47E-04	0.369	0.717
RWD	kg	6.54E-04	6.75E-04	4.48E-10	4.53E-08	2.39E-07	3.04E-06	7.84E-06
CRU	kg	0	0	0	0	0	0	0
MFR	kg	1.55	1.58	0	0	3.32	0	0
MER	kg	0.00299	0.00305	0	0	0	0	0
EEE	MJ	0	0	0	0	0	0	0
EET	MJ	0	0	0	0	0	0	0

End of Life

Parameter	Unit	Total
Steel collected separately	kg	3.32
Steel collected with mixed construction waste	kg	0.369
Recovery for re-use	kg	0
Recovery for recycling	kg	3.32
Recovery for energy recovery	kg	0
Disposal to landfill	kg	0.369
Assumptions for scenario	-	n/a

Biogenic Carbon Content

	Unit	A1-A3	A1-A3 incl. rollforming
Biogenic carbon content in product	kg C	0	0
Biogenic carbon content in packaging	kg C	0.00306	0.0338

Note: 1 kg biogenic carbon is equivalent to 44/12 kg CO₂

Additional Results for 1 m² of COLORBOND® steel in 0.45mm base metal thickness (BMT)

In accordance to EN 15804:2012+A1:2013

Environmental Impacts

Indicator	Unit	A1-A3	A1-A3 incl. rollforming	C1	C2	C3	C4	D
GWP	kg CO ₂ -eq.	12.2	12.6	0.00227	0.0172	0.160	0.0169	-4.19
ODP	kg CFC11-eq.	7.47E-12	8.43E-12	2.15E-16	2.06E-15	8.50E-13	2.76E-14	7.93E-14
AP	kg SO ₂ -eq.	0.0352	0.0366	7.61E-06	3.17E-05	6.67E-04	4.51E-05	-0.00401
EP	kg PO ₄ ³⁻ -eq.	0.00348	0.00366	1.77E-06	6.90E-06	6.01E-05	4.81E-06	-1.11E-04
POCP	kg ethene-eq.	0.00538	0.00554	7.50E-07	-8.43E-06	3.57E-05	4.21E-06	-0.00189
ADPE	kg Sb-eq.	2.80E-05	2.85E-05	2.81E-11	3.15E-10	1.36E-08	1.26E-09	-2.15E-07
ADPF	MJ	125	130	0.0306	0.231	1.75	0.244	-41.0

Additional Green Star v1.3 Indicators

Indicator	Unit	A1-A3	A1-A3 incl. rollforming	C1	C2	C3	C4	D
HTc - GS	CTUh	2.72E-10	2.88E-10	3.49E-15	4.81E-14	5.81E-12	7.77E-13	7.76E-11
HTnc - GS	CTUh	9.40E-11	3.73E-10	1.67E-15	1.08E-14	1.85E-13	1.81E-14	2.16E-12
LU - GS	kg C deficit-eq.	1.70	1.91	5.79E-06	4.48E-05	0.0182	0.00171	0.225
RDW - GS	m ³ -eq.	0.0104	0.0113	1.66E-07	1.40E-06	5.93E-04	1.79E-05	-0.0105
IR - GS	kBq U235-eq.	0.115	0.118	5.80E-08	5.88E-06	3.07E-05	4.49E-04	0.104
PM - GS	kg PM2.5-eq.	0.00283	0.00294	5.46E-07	1.49E-06	4.37E-05	3.18E-06	-3.16E-04

43. The results of this environmental impact indicator shall be used with care as the uncertainties on these results are high or as there is limited experience with the indicator.

44. This indicator includes all greenhouse gases included in GWP-total but excludes biogenic carbon dioxide emissions and uptake and biogenic carbon stored in the product as defined by the IPCC AR5 report (IPCC 2013). As this indicator uses the same characterisation factors as the GWP indicator required in v3.01 of the General Programme Instructions (GPI) of the International EPD® System, its inclusion creates comparability with EPDs based on other Product Category Rules (PCRs) aligned with v3.01 of the GPI, as well as comparability with other GHG reporting according ISO 14067.

45. This impact category deals mainly with the eventual impact of low dose ionizing radiation on human health of the nuclear fuel cycle. It does not consider effects due to possible nuclear accidents, occupational exposure nor due to radioactive waste disposal in underground facilities. Potential ionizing radiation from the soil, from radon and some construction materials, is also not measured by this indicator.

Environmental Product Declaration

COLORBOND® steel

Results for 1 m² of COLORBOND® steel in 0.48mm base metal thickness (BMT)

In accordance to EN 15804:2012+A2:2019

Product mass: 3.93 kg/m² flat

Note: Results for 'A1-A3 incl. rollforming' are for one square metre (1 m²) of flat product. The profile of the rollformed roofing/cladding product will affect how many flat square metres are required to cover a given surface area.

Environmental Impacts

Indicator	Unit	A1-A3	A1-A3 incl. rollforming	C1	C2	C3	C4	D
GWP-total	kg CO ₂ -eq.	13.2	13.6	0.00245	0.0186	0.173	0.0190	-4.69
GWP-fossil	kg CO ₂ -eq.	13.2	13.7	0.00245	0.0186	0.173	0.0190	-4.69
GWP-biogenic	kg CO ₂ -eq.	-0.00540	-0.107	2.43E-07	6.20E-06	1.93E-04	3.74E-05	0.00273
GWP-luluc	kg CO ₂ -eq.	4.13E-04	8.87E-04	1.78E-08	2.00E-07	6.63E-06	1.14E-05	-9.60E-05
ODP	kg CFC-11-eq.	6.54E-12	7.36E-12	1.95E-16	1.87E-15	7.68E-13	2.49E-14	7.26E-14
AP	mol H ⁺ -eq.	0.0457	0.0476	1.16E-05	4.80E-05	8.68E-04	5.98E-05	-0.00467
EP-freshwater	kg P-eq.	3.20E-06	4.46E-06	4.30E-10	3.06E-09	9.44E-08	1.45E-08	-8.37E-07
EP-marine	kg N-eq.	0.0102	0.0107	5.63E-06	2.17E-05	1.86E-04	1.46E-05	-3.54E-04
EP-terrestrial	mol N-eq.	0.114	0.119	6.16E-05	2.39E-04	0.00203	1.60E-04	1.31E-04
POCP	kg NMVOC-eq.	0.0343	0.0358	1.58E-05	4.63E-05	5.16E-04	4.61E-05	-0.00331
ADP-minerals & metals ⁴⁶	kg Sb-eq.	2.80E-05	2.85E-05	2.99E-11	3.35E-10	1.45E-08	1.32E-09	-2.37E-07
ADP-fossil ⁴⁶	MJ	133	139	0.0325	0.247	1.87	0.269	-42.5
WDP ⁴⁶	m ³ world-eq. deprived	0.955	1.03	1.82E-05	1.18E-04	0.0675	0.00129	-0.900

Additional Environmental Impacts

Indicator	Unit	A1-A3	A1-A3 incl. rollforming	C1	C2	C3	C4	D
GWP-GHG ⁴⁷	kg CO ₂ -eq.	12.9	13.4	0.00242	0.0184	0.171	0.0184	-4.51
PM	Disease incidence	5.68E-07	5.90E-07	1.32E-10	3.14E-10	8.46E-09	6.40E-10	-5.23E-08
IRP ⁴⁸	kBq U-235-eq.	0.117	0.120	6.17E-08	6.26E-06	3.26E-05	4.78E-04	0.110
ETP-fw ⁴⁶	CTUe	25.5	27.0	0.00817	0.0989	0.356	0.0797	-1.38
HTP-c ⁴⁶	CTUh	2.08E-09	2.18E-09	1.37E-13	1.67E-12	1.60E-11	9.45E-12	-1.97E-09
HTP-nc ⁴⁶	CTUh	2.92E-07	3.02E-07	8.56E-12	6.63E-11	5.32E-10	9.52E-10	-6.45E-08
SQP ⁴⁶	dimensionless	4.88	8.50	7.47E-05	6.96E-04	0.239	0.0209	0.572

Resource use

Parameter	Unit	A1-A3	A1-A3 incl. rollforming	C1	C2	C3	C4	D
PERE	MJ	7.77	9.23	1.06E-04	0.00121	0.402	0.0219	2.87
PERM	MJ	0	0	0	0	0	0	0
PERT	MJ	7.77	9.23	1.06E-04	0.00121	0.402	0.0219	2.87
PENRE	MJ	133	139	0.0325	0.247	1.87	0.269	-42.5
PENRM	MJ	0.418	0.426	0	0	0	0	0
PENRT	MJ	134	139	0.0325	0.247	1.87	0.269	-42.5
SM	kg	0.640	0.652	0	0	0	0	0
RSF	MJ	0	0	0	0	0	0	0
NRSF	MJ	0	0	0	0	0	0	0
FW	m ³	0.0232	0.0247	2.74E-07	2.35E-06	9.49E-04	3.79E-05	-0.0204

Waste Categories and Output Flows

Parameter	Unit	A1-A3	A1-A3 incl. rollforming	C1	C2	C3	C4	D
HWD	kg	3.81E-09	1.14E-08	3.53E-14	4.00E-13	6.24E-11	4.06E-11	-3.25E-10
NHWD	kg	0.236	0.248	4.65E-07	5.98E-06	5.82E-04	0.393	0.757
RWD	kg	6.60E-04	6.82E-04	4.77E-10	4.82E-08	2.54E-07	3.24E-06	8.30E-06
CRU	kg	0	0	0	0	0	0	0
MFR	kg	1.65	1.68	0	0	3.53	0	0
MER	kg	0.00299	0.00305	0	0	0	0	0
EEE	MJ	0	0	0	0	0	0	0
EET	MJ	0	0	0	0	0	0	0

End of Life

Parameter	Unit	Total
Steel collected separately	kg	3.53
Steel collected with mixed construction waste	kg	0.393
Recovery for re-use	kg	0
Recovery for recycling	kg	3.53
Recovery for energy recovery	kg	0
Disposal to landfill	kg	0.393
Assumptions for scenario	-	n/a

Biogenic Carbon Content

	Unit	A1-A3	A1-A3 incl. rollforming
Biogenic carbon content in product	kg C	0	0
Biogenic carbon content in packaging	kg C	0.00306	0.0358

Note: 1 kg biogenic carbon is equivalent to 44/12 kg CO₂

Additional Results for 1 m² of COLORBOND® steel in 0.48mm base metal thickness (BMT)

In accordance to EN 15804:2012+A1:2013

Environmental Impacts

Indicator	Unit	A1-A3	A1-A3 incl. rollforming	C1	C2	C3	C4	D
GWP	kg CO ₂ -eq.	12.8	13.2	0.00241	0.0183	0.170	0.0180	-4.46
ODP	kg CFC11-eq.	7.72E-12	8.73E-12	2.29E-16	2.20E-15	9.04E-13	2.93E-14	8.38E-14
AP	kg SO ₂ -eq.	0.0368	0.0384	8.09E-06	3.38E-05	7.10E-04	4.80E-05	-0.00428
EP	kg PO ₄ ³⁻ -eq.	0.00365	0.00384	1.88E-06	7.34E-06	6.40E-05	5.12E-06	-1.19E-04
POCP	kg ethene-eq.	0.00566	0.00583	7.98E-07	-8.97E-06	3.80E-05	4.48E-06	-0.00201
ADPE	kg Sb-eq.	2.80E-05	2.86E-05	2.99E-11	3.35E-10	1.45E-08	1.34E-09	-2.29E-07
ADPF	MJ	131	137	0.0325	0.246	1.86	0.260	-43.6

Additional Green Star v1.3 Indicators

Indicator	Unit	A1-A3	A1-A3 incl. rollforming	C1	C2	C3	C4	D
HTc - GS	CTUh	2.76E-10	2.93E-10	3.71E-15	5.12E-14	6.18E-12	8.26E-13	8.24E-11
HTnc - GS	CTUh	9.65E-11	3.93E-10	1.78E-15	1.15E-14	1.97E-13	1.92E-14	2.29E-12
LU - GS	kg C deficit-eq.	1.77	1.99	6.16E-06	4.77E-05	0.0194	0.00182	0.239
RDW - GS	m ³ -eq.	0.0107	0.0116	1.76E-07	1.49E-06	6.31E-04	1.90E-05	-0.0111
IR - GS	kBq U235-eq.	0.116	0.119	6.17E-08	6.26E-06	3.26E-05	4.78E-04	0.110
PM - GS	kg PM2.5-eq.	0.00297	0.00308	5.81E-07	1.58E-06	4.65E-05	3.38E-06	-3.37E-04

46. The results of this environmental impact indicator shall be used with care as the uncertainties on these results are high or as there is limited experience with the indicator.

47. This indicator includes all greenhouse gases included in GWP-total but excludes biogenic carbon dioxide emissions and uptake and biogenic carbon stored in the product as defined by the IPCC AR5 report (IPCC 2013). As this indicator uses the same characterisation factors as the GWP indicator required in v3.01 of the General Programme Instructions (GPI) of the International EPD® System, its inclusion creates comparability with EPDs based on other Product Category Rules (PCRs) aligned with v3.01 of the GPI, as well as comparability with other GHG reporting according ISO 14067.

48. This impact category deals mainly with the eventual impact of low dose ionizing radiation on human health of the nuclear fuel cycle. It does not consider effects due to possible nuclear accidents, occupational exposure nor due to radioactive waste disposal in underground facilities. Potential ionizing radiation from the soil, from radon and some construction materials, is also not measured by this indicator.

Environmental Product Declaration

COLORBOND® steel

Results for 1 m² of COLORBOND® steel in 0.55mm base metal thickness (BMT)

In accordance to EN 15804:2012+A2:2019

Product mass: 4.48 kg/m² flat

Note: Results for 'A1-A3 incl. rollforming' are for one square metre (1 m²) of flat product. The profile of the rollformed roofing/cladding product will affect how many flat square metres are required to cover a given surface area.

Environmental Impacts

Indicator	Unit	A1-A3	A1-A3 incl. rollforming	C1	C2	C3	C4	D
GWP-total	kg CO ₂ -eq.	14.6	15.1	0.00279	0.0212	0.197	0.0217	-5.34
GWP-fossil	kg CO ₂ -eq.	14.6	15.2	0.00279	0.0212	0.197	0.0216	-5.34
GWP-biogenic	kg CO ₂ -eq.	-0.00496	-0.121	2.77E-07	7.07E-06	2.20E-04	4.27E-05	0.00310
GWP-luluc	kg CO ₂ -eq.	4.34E-04	9.74E-04	2.03E-08	2.28E-07	7.56E-06	1.30E-05	-1.10E-04
ODP	kg CFC-11-eq.	7.03E-12	7.95E-12	2.22E-16	2.13E-15	8.76E-13	2.84E-14	8.16E-14
AP	mol H ⁺ -eq.	0.0504	0.0526	1.33E-05	5.47E-05	9.90E-04	6.82E-05	-0.00534
EP-freshwater	kg P-eq.	3.41E-06	4.84E-06	4.91E-10	3.49E-09	1.08E-07	1.66E-08	-9.53E-07
EP-marine	kg N-eq.	0.0112	0.0118	6.42E-06	2.47E-05	2.12E-04	1.66E-05	-4.09E-04
EP-terrestrial	mol N-eq.	0.126	0.132	7.03E-05	2.72E-04	0.00232	1.82E-04	8.32E-05
POCP	kg NMVOC-eq.	0.0379	0.0396	1.80E-05	5.28E-05	5.88E-04	5.26E-05	-0.00379
ADP-minerals & metals ⁴⁹	kg Sb-eq.	2.80E-05	2.86E-05	3.41E-11	3.82E-10	1.65E-08	1.51E-09	-2.69E-07
ADP-fossil ⁴⁹	MJ	147	154	0.0371	0.281	2.13	0.307	-48.4
WDP ⁴⁹	m ³ world-eq. deprived	1.02	1.10	2.07E-05	1.34E-04	0.0770	0.00147	-1.02

Additional Environmental Impacts

Indicator	Unit	A1-A3	A1-A3 incl. rollforming	C1	C2	C3	C4	D
GWP-GHG ⁵⁰	kg CO ₂ -eq.	14.3	14.9	0.00276	0.0210	0.195	0.0210	-5.14
PM	Disease incidence	6.32E-07	6.56E-07	1.50E-10	3.59E-10	9.65E-09	7.29E-10	-5.99E-08
IRP ⁵¹	kBq U-235-eq.	0.119	0.122	7.04E-08	7.14E-06	3.72E-05	5.45E-04	0.125
ETP-fw ⁴⁹	CTUe	27.2	29.0	0.00932	0.113	0.406	0.0909	-1.58
HTP-c ⁴⁹	CTUh	2.19E-09	2.30E-09	1.56E-13	1.91E-12	1.82E-11	1.08E-11	-2.24E-09
HTP-nc ⁴⁹	CTUh	3.22E-07	3.32E-07	9.76E-12	7.56E-11	6.06E-10	1.09E-09	-7.34E-08
SQP ⁴⁹	dimensionless	5.23	9.35	8.52E-05	7.93E-04	0.272	0.0238	0.651

Resource use

Parameter	Unit	A1-A3	A1-A3 incl. rollforming	C1	C2	C3	C4	D
PERE	MJ	8.14	9.78	1.21E-04	0.00137	0.458	0.0250	3.27
PERM	MJ	0	0	0	0	0	0	0
PERT	MJ	8.14	9.78	1.21E-04	0.00137	0.458	0.0250	3.27
PENRE	MJ	147	153	0.0371	0.281	2.13	0.307	-48.4
PENRM	MJ	0.418	0.426	0	0	0	0	0
PENRT	MJ	147	154	0.0371	0.281	2.13	0.307	-48.4
SM	kg	0.746	0.760	0	0	0	0	0
RSF	MJ	0	0	0	0	0	0	0
NRSF	MJ	0	0	0	0	0	0	0
FW	m ³	0.0243	0.0261	3.12E-07	2.68E-06	0.00108	4.32E-05	-0.0232

Waste Categories and Output Flows

Parameter	Unit	A1-A3	A1-A3 incl. rollforming	C1	C2	C3	C4	D
HWD	kg	4.06E-09	1.27E-08	4.02E-14	4.56E-13	7.11E-11	4.63E-11	-3.71E-10
NHWD	kg	0.241	0.255	5.30E-07	6.82E-06	6.64E-04	0.448	0.852
RWD	kg	6.73E-04	6.96E-04	5.44E-10	5.49E-08	2.90E-07	3.69E-06	9.35E-06
CRU	kg	0	0	0	0	0	0	0
MFR	kg	1.88	1.91	0	0	4.03	0	0
MER	kg	0.00299	0.00305	0	0	0	0	0
EEE	MJ	0	0	0	0	0	0	0
EET	MJ	0	0	0	0	0	0	0

End of Life

Parameter	Unit	Total
Steel collected separately	kg	4.03
Steel collected with mixed construction waste	kg	0.448
Recovery for re-use	kg	0
Recovery for recycling	kg	4.03
Recovery for energy recovery	kg	0
Disposal to landfill	kg	0.448
Assumptions for scenario	-	n/a

Biogenic Carbon Content

	Unit	A1-A3	A1-A3 incl. rollforming
Biogenic carbon content in product	kg C	0	0
Biogenic carbon content in packaging	kg C	0.00306	0.0403

Note: 1 kg biogenic carbon is equivalent to 44/12 kg CO₂

Additional Results for 1 m² of COLORBOND® steel in 0.55mm base metal thickness (BMT)

In accordance to EN 15804:2012+A1:2013

Environmental Impacts

Indicator	Unit	A1-A3	A1-A3 incl. rollforming	C1	C2	C3	C4	D
GWP	kg CO ₂ -eq.	14.2	14.7	0.00275	0.0209	0.194	0.0205	-5.08
ODP	kg CFC11-eq.	8.29E-12	9.44E-12	2.61E-16	2.51E-15	1.03E-12	3.35E-14	9.42E-14
AP	kg SO ₂ -eq.	0.0406	0.0423	9.23E-06	3.85E-05	8.10E-04	5.48E-05	-0.00489
EP	kg PO ₄ ³⁻ -eq.	0.00402	0.00424	2.15E-06	8.37E-06	7.30E-05	5.84E-06	-1.37E-04
POCP	kg ethene-eq.	0.00632	0.00651	9.11E-07	-1.02E-05	4.34E-05	5.11E-06	-0.00229
ADPE	kg Sb-eq.	2.80E-05	2.86E-05	3.41E-11	3.82E-10	1.65E-08	1.53E-09	-2.60E-07
ADPF	MJ	144	151	0.0371	0.281	2.12	0.296	-49.7

Additional Green Star v1.3 Indicators

Indicator	Unit	A1-A3	A1-A3 incl. rollforming	C1	C2	C3	C4	D
HTc - GS	CTUh	2.85E-10	3.05E-10	4.24E-15	5.84E-14	7.05E-12	9.42E-13	9.38E-11
HTnc - GS	CTUh	1.02E-10	4.40E-10	2.03E-15	1.31E-14	2.25E-13	2.19E-14	2.61E-12
LU - GS	kg C deficit-eq.	1.92	2.18	7.03E-06	5.44E-05	0.0221	0.00208	0.273
RDW - GS	m ³ -eq.	0.0114	0.0124	2.01E-07	1.70E-06	7.19E-04	2.17E-05	-0.0127
IR - GS	kBq U235-eq.	0.118	0.121	7.04E-08	7.14E-06	3.72E-05	5.45E-04	0.125
PM - GS	kg PM2.5-eq.	0.00330	0.00342	6.63E-07	1.80E-06	5.31E-05	3.86E-06	-3.85E-04

49. The results of this environmental impact indicator shall be used with care as the uncertainties on these results are high or as there is limited experience with the indicator.

50. This indicator includes all greenhouse gases included in GWP-total but excludes biogenic carbon dioxide emissions and uptake and biogenic carbon stored in the product as defined by the IPCC AR5 report (IPCC 2013). As this indicator uses the same characterisation factors as the GWP indicator required in v3.01 of the General Programme Instructions (GPI) of the International EPD® System, its inclusion creates comparability with EPDs based on other Product Category Rules (PCRs) aligned with v3.01 of the GPI, as well as comparability with other GHG reporting according ISO 14067.

51. This impact category deals mainly with the eventual impact of low dose ionizing radiation on human health of the nuclear fuel cycle. It does not consider effects due to possible nuclear accidents, occupational exposure nor due to radioactive waste disposal in underground facilities. Potential ionizing radiation from the soil, from radon and some construction materials, is also not measured by this indicator.

Environmental Product Declaration

COLORBOND® steel

Results for 1 m² of COLORBOND® steel in 0.60mm base metal thickness (BMT)

In accordance to EN 15804:2012+A2:2019

Product mass: 4.87 kg/m² flat

Note: Results for 'A1-A3 incl. rollforming' are for one square metre (1 m²) of flat product. The profile of the rollformed roofing/cladding product will affect how many flat square metres are required to cover a given surface area.

Environmental Impacts

Indicator	Unit	A1-A3	A1-A3 incl. rollforming	C1	C2	C3	C4	D
GWP-total	kg CO ₂ -eq.	15.7	16.2	0.00304	0.0231	0.214	0.0236	-5.80
GWP-fossil	kg CO ₂ -eq.	15.7	16.3	0.00304	0.0231	0.214	0.0235	-5.80
GWP-biogenic	kg CO ₂ -eq.	-0.00465	-0.131	3.01E-07	7.69E-06	2.39E-04	4.64E-05	0.00336
GWP-luluc	kg CO ₂ -eq.	4.49E-04	0.00104	2.21E-08	2.48E-07	8.22E-06	1.41E-05	-1.19E-04
ODP	kg CFC-11-eq.	7.38E-12	8.38E-12	2.41E-16	2.32E-15	9.53E-13	3.09E-14	8.81E-14
AP	mol H ⁺ -eq.	0.0538	0.0561	1.44E-05	5.95E-05	0.00108	7.42E-05	-0.00582
EP-freshwater	kg P-eq.	3.56E-06	5.11E-06	5.34E-10	3.80E-09	1.17E-07	1.80E-08	-1.04E-06
EP-marine	kg N-eq.	0.0120	0.0126	6.98E-06	2.69E-05	2.31E-04	1.81E-05	-4.48E-04
EP-terrestrial	mol N-eq.	0.134	0.141	7.65E-05	2.96E-04	0.00252	1.98E-04	4.91E-05
POCP	kg NMVOC-eq.	0.0405	0.0423	1.96E-05	5.75E-05	6.40E-04	5.72E-05	-0.00413
ADP-minerals & metals ⁵²	kg Sb-eq.	2.81E-05	2.87E-05	3.71E-11	4.16E-10	1.80E-08	1.64E-09	-2.93E-07
ADP-fossil ⁵²	MJ	157	164	0.0404	0.306	2.31	0.333	-52.6
WDP ⁵²	m ³ world-eq. deprived	1.06	1.15	2.26E-05	1.46E-04	0.0838	0.00160	-1.11

Additional Environmental Impacts

Indicator	Unit	A1-A3	A1-A3 incl. rollforming	C1	C2	C3	C4	D
GWP-GHG ⁵³	kg CO ₂ -eq.	15.3	15.9	0.00301	0.0229	0.212	0.0228	-5.59
PM	Disease incidence	6.77E-07	7.03E-07	1.63E-10	3.90E-10	1.05E-08	7.94E-10	-6.54E-08
IRP ⁵⁴	kBq U-235-eq.	0.120	0.124	7.66E-08	7.77E-06	4.05E-05	5.93E-04	0.136
ETP-fw ⁵²	CTUe	28.5	30.3	0.0101	0.123	0.442	0.0989	-1.72
HTP-c ⁵²	CTUh	2.27E-09	2.39E-09	1.70E-13	2.07E-12	1.98E-11	1.17E-11	-2.43E-09
HTP-nc ⁵²	CTUh	3.42E-07	3.54E-07	1.06E-11	8.22E-11	6.60E-10	1.18E-09	-7.98E-08
SQP ⁵²	dimensionless	5.47	9.95	9.27E-05	8.63E-04	0.296	0.0259	0.707

Resource use

Parameter	Unit	A1-A3	A1-A3 incl. rollforming	C1	C2	C3	C4	D
PERE	MJ	8.39	10.2	1.32E-04	0.00150	0.498	0.0272	3.55
PERM	MJ	0	0	0	0	0	0	0
PERT	MJ	8.39	10.2	1.32E-04	0.00150	0.498	0.0272	3.55
PENRE	MJ	157	164	0.0404	0.306	2.31	0.334	-52.6
PENRM	MJ	0.418	0.426	0	0	0	0	0
PENRT	MJ	157	164	0.0404	0.306	2.31	0.334	-52.6
SM	kg	0.822	0.837	0	0	0	0	0
RSF	MJ	0	0	0	0	0	0	0
NRSF	MJ	0	0	0	0	0	0	0
FW	m ³	0.0252	0.0270	3.40E-07	2.92E-06	0.00118	4.70E-05	-0.0252

Waste Categories and Output Flows

Parameter	Unit	A1-A3	A1-A3 incl. rollforming	C1	C2	C3	C4	D
HWD	kg	4.23E-09	1.36E-08	4.38E-14	4.97E-13	7.74E-11	5.04E-11	-4.04E-10
NHWD	kg	0.245	0.259	5.76E-07	7.42E-06	7.23E-04	0.488	0.919
RWD	kg	6.82E-04	7.06E-04	5.91E-10	5.98E-08	3.16E-07	4.02E-06	1.01E-05
CRU	kg	0	0	0	0	0	0	0
MFR	kg	2.04	2.08	0	0	4.38	0	0
MER	kg	0.00299	0.00305	0	0	0	0	0
EEE	MJ	0	0	0	0	0	0	0
EET	MJ	0	0	0	0	0	0	0

End of Life

Parameter	Unit	Total
Steel collected separately	kg	4.38
Steel collected with mixed construction waste	kg	0.487
Recovery for re-use	kg	0
Recovery for recycling	kg	4.38
Recovery for energy recovery	kg	0
Disposal to landfill	kg	0.487
Assumptions for scenario	-	n/a

Biogenic Carbon Content

	Unit	A1-A3	A1-A3 incl. rollforming
Biogenic carbon content in product	kg C	0	0
Biogenic carbon content in packaging	kg C	0.00306	0.0436

Note: 1 kg biogenic carbon is equivalent to 44/12 kg CO₂

Additional Results for 1 m² of COLORBOND® steel in 0.60mm base metal thickness (BMT)

In accordance to EN 15804:2012+A1:2013

Environmental Impacts

Indicator	Unit	A1-A3	A1-A3 incl. rollforming	C1	C2	C3	C4	D
GWP	kg CO ₂ -eq.	15.2	15.7	0.00300	0.0228	0.211	0.0223	-5.52
ODP	kg CFC11-eq.	8.71E-12	9.95E-12	2.84E-16	2.73E-15	1.12E-12	3.64E-14	1.02E-13
AP	kg SO ₂ -eq.	0.0433	0.0452	1.00E-05	4.19E-05	8.81E-04	5.96E-05	-0.00532
EP	kg PO ₄ ³⁻ -eq.	0.00430	0.00453	2.34E-06	9.11E-06	7.94E-05	6.35E-06	-1.50E-04
POCP	kg ethene-eq.	0.00679	0.00699	9.91E-07	-1.11E-05	4.72E-05	5.56E-06	-0.00249
ADPE	kg Sb-eq.	2.81E-05	2.87E-05	3.71E-11	4.16E-10	1.80E-08	1.67E-09	-2.83E-07
ADPF	MJ	154	161	0.0403	0.305	2.30	0.322	-54.0

Additional Green Star v1.3 Indicators

Indicator	Unit	A1-A3	A1-A3 incl. rollforming	C1	C2	C3	C4	D
HTc - GS	CTUh	2.92E-10	3.13E-10	4.61E-15	6.35E-14	7.67E-12	1.03E-12	1.02E-10
HTnc - GS	CTUh	1.06E-10	4.74E-10	2.20E-15	1.43E-14	2.44E-13	2.39E-14	2.84E-12
LU - GS	kg C deficit-eq.	2.03	2.31	7.65E-06	5.92E-05	0.0241	0.00226	0.296
RDW - GS	m ³ -eq.	0.0119	0.0129	2.19E-07	1.85E-06	7.82E-04	2.36E-05	-0.0138
IR - GS	kBq U235-eq.	0.120	0.123	7.66E-08	7.77E-06	4.05E-05	5.93E-04	0.136
PM - GS	kg PM2.5-eq.	0.00353	0.00367	7.21E-07	1.96E-06	5.78E-05	4.20E-06	-4.20E-04

52. The results of this environmental impact indicator shall be used with care as the uncertainties on these results are high or as there is limited experience with the indicator.

53. This indicator includes all greenhouse gases included in GWP-total but excludes biogenic carbon dioxide emissions and uptake and biogenic carbon stored in the product as defined by the IPCC AR5 report (IPCC 2013). As this indicator uses the same characterisation factors as the GWP indicator required in v3.01 of the General Programme Instructions (GPI) of the International EPD® System, its inclusion creates comparability with EPDs based on other Product Category Rules (PCRs) aligned with v3.01 of the GPI, as well as comparability with other GHG reporting according ISO 14067.

54. This impact category deals mainly with the eventual impact of low dose ionizing radiation on human health of the nuclear fuel cycle. It does not consider effects due to possible nuclear accidents, occupational exposure nor due to radioactive waste disposal in underground facilities. Potential ionizing radiation from the soil, from radon and some construction materials, is also not measured by this indicator.

Environmental Product Declaration

COLORBOND® steel

Results for 1 m² of COLORBOND® steel in 0.70mm base metal thickness (BMT)

In accordance to EN 15804:2012+A2:2019

Product mass: 5.65 kg/m² flat

Note: Results for 'A1-A3 incl. rollforming' are for one square metre (1 m²) of flat product. The profile of the rollformed roofing/cladding product will affect how many flat square metres are required to cover a given surface area.

Environmental Impacts

Indicator	Unit	A1-A3	A1-A3 incl. rollforming	C1	C2	C3	C4	D
GWP-total	kg CO ₂ -eq.	17.7	18.3	0.00353	0.0268	0.249	0.0274	-6.73
GWP-fossil	kg CO ₂ -eq.	17.7	18.4	0.00353	0.0268	0.249	0.0273	-6.73
GWP-biogenic	kg CO ₂ -eq.	-0.00402	-0.150	3.50E-07	8.94E-06	2.78E-04	5.39E-05	0.00389
GWP-luluc	kg CO ₂ -eq.	4.79E-04	0.00116	2.56E-08	2.88E-07	9.55E-06	1.64E-05	-1.39E-04
ODP	kg CFC-11-eq.	8.08E-12	9.23E-12	2.80E-16	2.69E-15	1.11E-12	3.59E-14	1.01E-13
AP	mol H ⁺ -eq.	0.0606	0.0632	1.68E-05	6.92E-05	0.00125	8.62E-05	-0.00677
EP-freshwater	kg P-eq.	3.86E-06	5.65E-06	6.21E-10	4.41E-09	1.36E-07	2.10E-08	-1.20E-06
EP-marine	kg N-eq.	0.0134	0.0142	8.11E-06	3.13E-05	2.68E-04	2.10E-05	-5.27E-04
EP-terrestrial	mol N-eq.	0.151	0.159	8.88E-05	3.44E-04	0.00293	2.30E-04	-1.92E-05
POCP	kg NMVOC-eq.	0.0456	0.0477	2.27E-05	6.68E-05	7.44E-04	6.65E-05	-0.00481
ADP-minerals & metals ⁵⁵	kg Sb-eq.	2.82E-05	2.88E-05	4.31E-11	4.83E-10	2.09E-08	1.90E-09	-3.40E-07
ADP-fossil ⁵⁵	MJ	177	185	0.0469	0.355	2.69	0.387	-61.0
WDP ⁵⁵	m ³ world-eq. deprived	1.15	1.25	2.62E-05	1.70E-04	0.0973	0.00185	-1.29

Additional Environmental Impacts

Indicator	Unit	A1-A3	A1-A3 incl. rollforming	C1	C2	C3	C4	D
GWP-GHG ⁵⁶	kg CO ₂ -eq.	17.3	18.0	0.00349	0.0266	0.247	0.0265	-6.48
PM	Disease incidence	7.67E-07	7.97E-07	1.90E-10	4.53E-10	1.22E-08	9.22E-10	-7.63E-08
IRP ⁵⁷	kBq U-235-eq.	0.123	0.127	8.90E-08	9.03E-06	4.70E-05	6.89E-04	0.158
ETP-fw ⁵⁵	CTUe	30.9	33.1	0.0118	0.143	0.514	0.115	-2.01
HTP-c ⁵⁵	CTUh	2.43E-09	2.56E-09	1.98E-13	2.41E-12	2.30E-11	1.36E-11	-2.82E-09
HTP-nc ⁵⁵	CTUh	3.84E-07	3.97E-07	1.23E-11	9.55E-11	7.67E-10	1.37E-09	-9.26E-08
SQP ⁵⁵	dimensionless	5.96	11.2	1.08E-04	0.00100	0.344	0.0301	0.819

Resource use

Parameter	Unit	A1-A3	A1-A3 incl. rollforming	C1	C2	C3	C4	D
PERE	MJ	8.91	11.0	1.53E-04	0.00174	0.579	0.0316	4.12
PERM	MJ	0	0	0	0	0	0	0
PERT	MJ	8.91	11.0	1.53E-04	0.00174	0.579	0.0316	4.12
PENRE	MJ	176	184	0.0469	0.356	2.69	0.388	-61.0
PENRM	MJ	0.418	0.426	0	0	0	0	0
PENRT	MJ	177	185	0.0469	0.356	2.69	0.388	-61.0
SM	kg	0.974	0.992	0	0	0	0	0
RSF	MJ	0	0	0	0	0	0	0
NRSF	MJ	0	0	0	0	0	0	0
FW	m ³	0.0268	0.0289	3.95E-07	3.39E-06	0.00137	5.46E-05	-0.0292

Waste Categories and Output Flows

Parameter	Unit	A1-A3	A1-A3 incl. rollforming	C1	C2	C3	C4	D
HWD	kg	4.58E-09	1.54E-08	5.09E-14	5.77E-13	8.99E-11	5.85E-11	-4.70E-10
NHWD	kg	0.252	0.268	6.70E-07	8.62E-06	8.40E-04	0.566	1.05
RWD	kg	7.00E-04	7.27E-04	6.87E-10	6.94E-08	3.67E-07	4.67E-06	1.16E-05
CRU	kg	0	0	0	0	0	0	0
MFR	kg	2.37	2.42	0	0	5.09	0	0
MER	kg	0.00299	0.00305	0	0	0	0	0
EEE	MJ	0	0	0	0	0	0	0
EET	MJ	0	0	0	0	0	0	0

End of Life

Parameter	Unit	Total
Steel collected separately	kg	5.09
Steel collected with mixed construction waste	kg	0.565
Recovery for re-use	kg	0
Recovery for recycling	kg	5.09
Recovery for energy recovery	kg	0
Disposal to landfill	kg	0.565
Assumptions for scenario	-	n/a

Biogenic Carbon Content

	Unit	A1-A3	A1-A3 incl. rollforming
Biogenic carbon content in product	kg C	0	0
Biogenic carbon content in packaging	kg C	0.00306	0.0501

Note: 1 kg biogenic carbon is equivalent to 44/12 kg CO₂

Additional Results for 1 m² of COLORBOND® steel in 0.70mm base metal thickness (BMT)

In accordance to EN 15804:2012+A1:2013

Environmental Impacts

Indicator	Unit	A1-A3	A1-A3 incl. rollforming	C1	C2	C3	C4	D
GWP	kg CO ₂ -eq.	17.2	17.8	0.00348	0.0264	0.245	0.0259	-6.40
ODP	kg CFC11-eq.	9.53E-12	1.10E-11	3.30E-16	3.17E-15	1.30E-12	4.23E-14	1.17E-13
AP	kg SO ₂ -eq.	0.0488	0.0509	1.17E-05	4.87E-05	0.00102	6.92E-05	-0.00620
EP	kg PO ₄ ³⁻ -eq.	0.00484	0.00510	2.72E-06	1.06E-05	9.22E-05	7.38E-06	-1.77E-04
POCP	kg ethene-eq.	0.00772	0.00796	1.15E-06	-1.29E-05	5.48E-05	6.46E-06	-0.00289
ADPE	kg Sb-eq.	2.82E-05	2.88E-05	4.31E-11	4.83E-10	2.09E-08	1.93E-09	-3.28E-07
ADPF	MJ	174	182	0.0469	0.355	2.68	0.374	-62.7

Additional Green Star v1.3 Indicators

Indicator	Unit	A1-A3	A1-A3 incl. rollforming	C1	C2	C3	C4	D
HTc - GS	CTUh	3.06E-10	3.29E-10	5.36E-15	7.38E-14	8.91E-12	1.19E-12	1.18E-10
HTnc - GS	CTUh	1.15E-10	5.41E-10	2.56E-15	1.66E-14	2.84E-13	2.77E-14	3.29E-12
LU - GS	kg C deficit-eq.	2.26	2.57	8.89E-06	6.87E-05	0.0280	0.00262	0.343
RDW - GS	m ³ -eq.	0.0129	0.0141	2.54E-07	2.15E-06	9.09E-04	2.74E-05	-0.0160
IR - GS	kBq U235-eq.	0.123	0.126	8.90E-08	9.02E-06	4.70E-05	6.89E-04	0.158
PM - GS	kg PM2.5-eq.	0.00399	0.00415	8.38E-07	2.28E-06	6.71E-05	4.87E-06	-4.89E-04

55. The results of this environmental impact indicator shall be used with care as the uncertainties on these results are high or as there is limited experience with the indicator.

56. This indicator includes all greenhouse gases included in GWP-total but excludes biogenic carbon dioxide emissions and uptake and biogenic carbon stored in the product as defined by the IPCC AR5 report (IPCC 2013). As this indicator uses the same characterisation factors as the GWP indicator required in v3.01 of the General Programme Instructions (GPI) of the International EPD® System, its inclusion creates comparability with EPDs based on other Product Category Rules (PCRs) aligned with v3.01 of the GPI, as well as comparability with other GHG reporting according ISO 14067.

57. This impact category deals mainly with the eventual impact of low dose ionizing radiation on human health of the nuclear fuel cycle. It does not consider effects due to possible nuclear accidents, occupational exposure nor due to radioactive waste disposal in underground facilities. Potential ionizing radiation from the soil, from radon and some construction materials, is also not measured by this indicator.

Environmental Product Declaration

COLORBOND® steel

Results for 1 m² of COLORBOND® steel in 0.75mm base metal thickness (BMT)

In accordance to EN 15804:2012+A2:2019

Product mass: 6.05 kg/m² flat

Note: Results for 'A1-A3 incl. rollforming' are for one square metre (1 m²) of flat product. The profile of the rollformed roofing/cladding product will affect how many flat square metres are required to cover a given surface area.

Environmental Impacts

Indicator	Unit	A1-A3	A1-A3 incl. rollforming	C1	C2	C3	C4	D
GWP-total	kg CO ₂ -eq.	18.7	19.4	0.00378	0.0287	0.267	0.0293	-7.19
GWP-fossil	kg CO ₂ -eq.	18.8	19.5	0.00378	0.0287	0.266	0.0292	-7.20
GWP-biogenic	kg CO ₂ -eq.	-0.00371	-0.160	3.74E-07	9.56E-06	2.97E-04	5.77E-05	0.00415
GWP-luluc	kg CO ₂ -eq.	4.94E-04	0.00122	2.74E-08	3.09E-07	1.02E-05	1.76E-05	-1.49E-04
ODP	kg CFC-11-eq.	8.43E-12	9.65E-12	3.00E-16	2.88E-15	1.18E-12	3.84E-14	1.08E-13
AP	mol H ⁺ -eq.	0.0639	0.0668	1.80E-05	7.40E-05	0.00134	9.22E-05	-0.00725
EP-freshwater	kg P-eq.	4.01E-06	5.92E-06	6.64E-10	4.72E-09	1.45E-07	2.24E-08	-1.29E-06
EP-marine	kg N-eq.	0.0142	0.0149	8.67E-06	3.34E-05	2.87E-04	2.25E-05	-5.66E-04
EP-terrestrial	mol N-eq.	0.160	0.168	9.50E-05	3.68E-04	0.00313	2.47E-04	-5.34E-05
POCP	kg NMVOC-eq.	0.0482	0.0505	2.43E-05	7.14E-05	7.96E-04	7.11E-05	-0.00515
ADP-minerals & metals ⁵⁸	kg Sb-eq.	2.82E-05	2.88E-05	4.61E-11	5.16E-10	2.23E-08	2.04E-09	-3.63E-07
ADP-fossil ⁵⁸	MJ	186	195	0.0501	0.380	2.88	0.414	-65.2
WDP ⁵⁸	m ³ world-eq. deprived	1.20	1.30	2.80E-05	1.81E-04	0.104	0.00198	-1.38

Additional Environmental Impacts

Indicator	Unit	A1-A3	A1-A3 incl. rollforming	C1	C2	C3	C4	D
GWP-GHG ⁵⁹	kg CO ₂ -eq.	18.3	19.1	0.00374	0.0284	0.264	0.0284	-6.93
PM	Disease incidence	8.12E-07	8.44E-07	2.03E-10	4.85E-10	1.30E-08	9.86E-10	-8.17E-08
IRP ⁶⁰	kBq U-235-eq.	0.125	0.128	9.52E-08	9.65E-06	5.03E-05	7.37E-04	0.169
ETP-fw ⁵⁸	CTUe	32.2	34.5	0.0126	0.152	0.549	0.123	-2.15
HTP-c ⁵⁸	CTUh	2.51E-09	2.65E-09	2.11E-13	2.58E-12	2.46E-11	1.46E-11	-3.02E-09
HTP-nc ⁵⁸	CTUh	4.05E-07	4.18E-07	1.32E-11	1.02E-10	8.20E-10	1.47E-09	-9.90E-08
SQP ⁵⁸	dimensionless	6.21	11.8	1.15E-04	0.00107	0.368	0.0322	0.875

Resource use

Parameter	Unit	A1-A3	A1-A3 incl. rollforming	C1	C2	C3	C4	D
PERE	MJ	9.17	11.4	1.64E-04	0.00186	0.619	0.0338	4.40
PERM	MJ	0	0	0	0	0	0	0
PERT	MJ	9.17	11.4	1.64E-04	0.00186	0.619	0.0338	4.40
PENRE	MJ	186	195	0.0501	0.380	2.88	0.415	-65.2
PENRM	MJ	0.418	0.426	0	0	0	0	0
PENRT	MJ	187	195	0.0501	0.380	2.88	0.415	-65.2
SM	kg	1.05	1.07	0	0	0	0	0
RSF	MJ	0	0	0	0	0	0	0
NRSF	MJ	0	0	0	0	0	0	0
FW	m ³	0.0276	0.0299	4.22E-07	3.62E-06	0.00146	5.84E-05	-0.0313

Waste Categories and Output Flows

Parameter	Unit	A1-A3	A1-A3 incl. rollforming	C1	C2	C3	C4	D
HWD	kg	4.76E-09	1.64E-08	5.44E-14	6.17E-13	9.61E-11	6.26E-11	-5.03E-10
NHWD	kg	0.256	0.273	7.16E-07	9.22E-06	8.98E-04	0.606	1.12
RWD	kg	7.09E-04	7.37E-04	7.35E-10	7.43E-08	3.92E-07	4.99E-06	1.24E-05
CRU	kg	0	0	0	0	0	0	0
MFR	kg	2.54	2.59	0	0	5.44	0	0
MER	kg	0.00299	0.00305	0	0	0	0	0
EEE	MJ	0	0	0	0	0	0	0
EET	MJ	0	0	0	0	0	0	0

End of Life

Parameter	Unit	Total
Steel collected separately	kg	5.44
Steel collected with mixed construction waste	kg	0.605
Recovery for re-use	kg	0
Recovery for recycling	kg	5.44
Recovery for energy recovery	kg	0
Disposal to landfill	kg	0.605
Assumptions for scenario	-	n/a

Biogenic Carbon Content

	Unit	A1-A3	A1-A3 incl. rollforming
Biogenic carbon content in product	kg C	0	0
Biogenic carbon content in packaging	kg C	0.00306	0.0534

Note: 1 kg biogenic carbon is equivalent to 44/12 kg CO₂

Additional Results for 1 m² of COLORBOND® steel in 0.75mm base metal thickness (BMT)

In accordance to EN 15804:2012+A1:2013

Environmental Impacts

Indicator	Unit	A1-A3	A1-A3 incl. rollforming	C1	C2	C3	C4	D
GWP	kg CO ₂ -eq.	18.2	18.8	0.00372	0.0283	0.262	0.0277	-6.84
ODP	kg CFC11-eq.	9.94E-12	1.15E-11	3.53E-16	3.39E-15	1.39E-12	4.52E-14	1.24E-13
AP	kg SO ₂ -eq.	0.0515	0.0538	1.25E-05	5.21E-05	0.00109	7.40E-05	-0.00663
EP	kg PO ₄ ³⁻ -eq.	0.00511	0.00539	2.91E-06	1.13E-05	9.87E-05	7.90E-06	-1.90E-04
POCP	kg ethene-eq.	0.00819	0.00844	1.23E-06	-1.38E-05	5.86E-05	6.91E-06	-0.00309
ADPE	kg Sb-eq.	2.82E-05	2.88E-05	4.61E-11	5.17E-10	2.23E-08	2.07E-09	-3.51E-07
ADPF	MJ	183	192	0.0501	0.379	2.86	0.400	-67.0

Additional Green Star v1.3 Indicators

Indicator	Unit	A1-A3	A1-A3 incl. rollforming	C1	C2	C3	C4	D
HTc - GS	CTUh	3.13E-10	3.38E-10	5.73E-15	7.89E-14	9.53E-12	1.27E-12	1.26E-10
HTnc - GS	CTUh	1.19E-10	5.75E-10	2.74E-15	1.78E-14	3.04E-13	2.97E-14	3.51E-12
LU - GS	kg C deficit-eq.	2.37	2.71	9.50E-06	7.35E-05	0.0299	0.00281	0.367
RDW - GS	m ³ -eq.	0.0134	0.0146	2.72E-07	2.30E-06	9.72E-04	2.93E-05	-0.0171
IR - GS	kBq U235-eq.	0.124	0.128	9.52E-08	9.65E-06	5.03E-05	7.37E-04	0.169
PM - GS	kg PM2.5-eq.	0.00423	0.00439	8.96E-07	2.44E-06	7.18E-05	5.21E-06	-5.24E-04

58. The results of this environmental impact indicator shall be used with care as the uncertainties on these results are high or as there is limited experience with the indicator.

59. This indicator includes all greenhouse gases included in GWP-total but excludes biogenic carbon dioxide emissions and uptake and biogenic carbon stored in the product as defined by the IPCC AR5 report (IPCC 2013). As this indicator uses the same characterisation factors as the GWP indicator required in v3.01 of the General Programme Instructions (GPI) of the International EPD® System, its inclusion creates comparability with EPDs based on other Product Category Rules (PCRs) aligned with v3.01 of the GPI, as well as comparability with other GHG reporting according ISO 14067.

60. This impact category deals mainly with the eventual impact of low dose ionizing radiation on human health of the nuclear fuel cycle. It does not consider effects due to possible nuclear accidents, occupational exposure nor due to radioactive waste disposal in underground facilities. Potential ionizing radiation from the soil, from radon and some construction materials, is also not measured by this indicator.

Environmental Product Declaration

COLORBOND® steel

Results for 1 m² of COLORBOND® steel in 1.00mm base metal thickness (BMT)

In accordance to EN 15804:2012+A2:2019

Product mass: 8.01 kg/m² flat

Note: Results for 'A1-A3 incl. rollforming' are for one square metre (1 m²) of flat product. The profile of the rollformed roofing/cladding product will affect how many flat square metres are required to cover a given surface area.

Environmental Impacts

Indicator	Unit	A1-A3	A1-A3 incl. rollforming	C1	C2	C3	C4	D
GWP-total	kg CO ₂ -eq.	23.9	24.7	0.00501	0.0380	0.353	0.0388	-9.52
GWP-fossil	kg CO ₂ -eq.	23.9	24.9	0.00501	0.0380	0.353	0.0387	-9.52
GWP-biogenic	kg CO ₂ -eq.	-0.00214	-0.209	4.96E-07	1.27E-05	3.94E-04	7.64E-05	0.00547
GWP-luluc	kg CO ₂ -eq.	5.69E-04	0.00153	3.63E-08	4.09E-07	1.35E-05	2.33E-05	-1.97E-04
ODP	kg CFC-11-eq.	1.02E-11	1.18E-11	3.98E-16	3.81E-15	1.57E-12	5.09E-14	1.40E-13
AP	mol H ⁺ -eq.	0.0808	0.0845	2.38E-05	9.80E-05	0.00177	1.22E-04	-0.00965
EP-freshwater	kg P-eq.	4.75E-06	7.28E-06	8.80E-10	6.25E-09	1.93E-07	2.97E-08	-1.70E-06
EP-marine	kg N-eq.	0.0179	0.0189	1.15E-05	4.43E-05	3.80E-04	2.98E-05	-7.63E-04
EP-terrestrial	mol N-eq.	0.202	0.213	1.26E-04	4.87E-04	0.00415	3.27E-04	-2.24E-04
POCP	kg NMVOC-eq.	0.0611	0.0640	3.22E-05	9.46E-05	0.00105	9.42E-05	-0.00685
ADP-minerals & metals ⁶¹	kg Sb-eq.	2.84E-05	2.90E-05	6.11E-11	6.84E-10	2.96E-08	2.70E-09	-4.80E-07
ADP-fossil ⁶¹	MJ	235	247	0.0665	0.504	3.81	0.549	-86.3
WDP ⁶¹	m ³ world-eq. deprived	1.42	1.56	3.72E-05	2.40E-04	0.138	0.00263	-1.83

Additional Environmental Impacts

Indicator	Unit	A1-A3	A1-A3 incl. rollforming	C1	C2	C3	C4	D
GWP-GHG ⁶²	kg CO ₂ -eq.	23.3	24.3	0.00495	0.0376	0.350	0.0376	-9.16
PM	Disease incidence	1.04E-06	1.08E-06	2.69E-10	6.42E-10	1.73E-08	1.31E-09	-1.09E-07
IRP ⁶³	kBq U-235-eq.	0.132	0.137	1.26E-07	1.28E-05	6.67E-05	9.77E-04	0.223
ETP-fw ⁶¹	CTUe	38.4	41.3	0.0167	0.202	0.728	0.163	-2.86
HTP-c ⁶¹	CTUh	2.90E-09	3.08E-09	2.80E-13	3.41E-12	3.26E-11	1.93E-11	-3.99E-09
HTP-nc ⁶¹	CTUh	5.09E-07	5.27E-07	1.75E-11	1.35E-10	1.09E-09	1.95E-09	-1.31E-07
SQP ⁶¹	dimensionless	7.44	14.8	1.53E-04	0.00142	0.488	0.0427	1.16

Resource use

Parameter	Unit	A1-A3	A1-A3 incl. rollforming	C1	C2	C3	C4	D
PERE	MJ	10.5	13.3	2.17E-04	0.00246	0.820	0.0449	5.82
PERM	MJ	0	0	0	0	0	0	0
PERT	MJ	10.5	13.3	2.17E-04	0.00246	0.820	0.0449	5.82
PENRE	MJ	235	246	0.0665	0.504	3.81	0.549	-86.3
PENRM	MJ	0.418	0.426	0	0	0	0	0
PENRT	MJ	236	247	0.0665	0.504	3.81	0.549	-86.3
SM	kg	1.43	1.46	0	0	0	0	0
RSF	MJ	0	0	0	0	0	0	0
NRSF	MJ	0	0	0	0	0	0	0
FW	m ³	0.0317	0.0346	5.59E-07	4.80E-06	0.00194	7.74E-05	-0.0413

Waste Categories and Output Flows

Parameter	Unit	A1-A3	A1-A3 incl. rollforming	C1	C2	C3	C4	D
HWD	kg	5.63E-09	2.10E-08	7.21E-14	8.18E-13	1.27E-10	8.30E-11	-6.68E-10
NHWD	kg	0.274	0.296	9.49E-07	1.22E-05	0.00119	0.803	1.46
RWD	kg	7.55E-04	7.88E-04	9.74E-10	9.84E-08	5.20E-07	6.62E-06	1.61E-05
CRU	kg	0	0	0	0	0	0	0
MFR	kg	3.37	3.43	0	0	7.22	0	0
MER	kg	0.00299	0.00305	0	0	0	0	0
EEE	MJ	0	0	0	0	0	0	0
EET	MJ	0	0	0	0	0	0	0

End of Life

Parameter	Unit	Total
Steel collected separately	kg	7.22
Steel collected with mixed construction waste	kg	0.801
Recovery for re-use	kg	0
Recovery for recycling	kg	7.22
Recovery for energy recovery	kg	0
Disposal to landfill	kg	0.801
Assumptions for scenario	-	n/a

Biogenic Carbon Content

	Unit	A1-A3	A1-A3 incl. rollforming
Biogenic carbon content in product	kg C	0	0
Biogenic carbon content in packaging	kg C	0.00306	0.0697

Note: 1 kg biogenic carbon is equivalent to 44/12 kg CO₂

Additional Results for 1 m² of COLORBOND® steel in 1.00mm base metal thickness (BMT)

In accordance to EN 15804:2012+A1:2013

Environmental Impacts

Indicator	Unit	A1-A3	A1-A3 incl. rollforming	C1	C2	C3	C4	D
GWP	kg CO ₂ -eq.	23.2	24.0	0.00493	0.0375	0.348	0.0368	-9.05
ODP	kg CFC11-eq.	1.20E-11	1.40E-11	4.68E-16	4.49E-15	1.85E-12	6.00E-14	1.61E-13
AP	kg SO ₂ -eq.	0.0651	0.0680	1.65E-05	6.90E-05	0.00145	9.81E-05	-0.00881
EP	kg PO ₄ ³⁻ -eq.	0.00646	0.00683	3.85E-06	1.50E-05	1.31E-04	1.05E-05	-2.56E-04
POCP	kg ethene-eq.	0.0105	0.0109	1.63E-06	-1.83E-05	7.77E-05	9.15E-06	-0.00409
ADPE	kg Sb-eq.	2.84E-05	2.90E-05	6.11E-11	6.85E-10	2.96E-08	2.74E-09	-4.64E-07
ADPF	MJ	232	243	0.0664	0.503	3.80	0.530	-88.6

Additional Green Star v1.3 Indicators

Indicator	Unit	A1-A3	A1-A3 incl. rollforming	C1	C2	C3	C4	D
HTc - GS	CTUh	3.47E-10	3.79E-10	7.59E-15	1.05E-13	1.26E-11	1.69E-12	1.67E-10
HTnc - GS	CTUh	1.40E-10	7.43E-10	3.63E-15	2.35E-14	4.03E-13	3.93E-14	4.64E-12
LU - GS	kg C deficit-eq.	2.92	3.37	1.26E-05	9.75E-05	0.0396	0.00372	0.485
RDW - GS	m ³ -eq.	0.0158	0.0174	3.60E-07	3.05E-06	0.00129	3.89E-05	-0.0226
IR - GS	kBq U235-eq.	0.132	0.136	1.26E-07	1.28E-05	6.67E-05	9.77E-04	0.223
PM - GS	kg PM2.5-eq.	0.00539	0.00561	1.19E-06	3.23E-06	9.51E-05	6.91E-06	-6.97E-04

61. The results of this environmental impact indicator shall be used with care as the uncertainties on these results are high or as there is limited experience with the indicator.

62. This indicator includes all greenhouse gases included in GWP-total but excludes biogenic carbon dioxide emissions and uptake and biogenic carbon stored in the product as defined by the IPCC AR5 report (IPCC 2013). As this indicator uses the same characterisation factors as the GWP indicator required in v3.01 of the General Programme Instructions (GPI) of the International EPD® System, its inclusion creates comparability with EPDs based on other Product Category Rules (PCRs) aligned with v3.01 of the GPI, as well as comparability with other GHG reporting according ISO 14067.

63. This impact category deals mainly with the eventual impact of low dose ionizing radiation on human health of the nuclear fuel cycle. It does not consider effects due to possible nuclear accidents, occupational exposure nor due to radioactive waste disposal in underground facilities. Potential ionizing radiation from the soil, from radon and some construction materials, is also not measured by this indicator.

Interpretation of Results

Impact Category Results

The majority of production (A1-A3) impacts arise from the combustion of fossil fuels, either directly or in the upstream production of electricity and materials. The upstream production of Hot Rolled Coil steel substrate was the most significant contributor to most environmental impact indicators, and the base metal thickness (BMT) has significant influence on the results due to the dominance of the manufacturing of the steel substrate. This emphasises the importance of selecting the appropriate BMT for the intended application; where a thicker steel sheet does not contribute to structural integrity, a lighter-weight version of COLORBOND® steel (XRW) with a lower BMT should be considered.

The upstream production of metal coating alloys – a combination of aluminium, zinc and magnesium applied to the steel substrate for corrosion protection – was the most significant contributor to ADP-minerals & metals, IRP, and SQP, and also contributed significantly to most indicators.

Rollforming generally adds less than 5% to total impacts, but has significant impact for EP-freshwater, ODP, WDP, and SQP. These impacts were driven by the upstream production of electricity and cardboard used by rollformers.

Assumption of average product – Sensitivity of results

When similar products are manufactured on different production lines, there is sometimes variation in results. Should production scheduling change significantly, this may be reflected in changes in the calculated impacts. The reason for these differences is the different mix of production routes that contribute to each product. Where products are preferentially made at different locations, the differences are most evident. While unlikely, should production scheduling change significantly, this may be reflected in changes in the calculated impacts. The variation in impact across production lines for COLORBOND® steel (XRW) (flat product) is well under 10%.

Comparison of the EN15804+A1 results to 2019 COLORBOND® steel EPD v1.1 and LCA

The results of this study have been compared to earlier results for the EN 15804+A1 environmental impact indicators reported in 2019 for COLORBOND® steel at BMT 0.42mm and 0.48mm. The results for COLORBOND® steel (XRW) in this EPD are affected both by the update to the LCA, and updates to the Steel - Hot Rolled Coil EPD (which represents the steel substrate) in 2020, including the split of steel grade types.

Key changes made to the LCA include:

- The Life Cycle Inventory (LCI) data update: the updated data did not show any clear trends with inputs and outputs increasing or decreasing per tonne of production, especially when considering the complex production routes with multiple metal coating and painting lines contributing to the final average product.
- Production and allocation modelling update: this study focused on refining the allocation methodology for branded products, including splitting out some products that had previously been grouped together (e.g. COLORBOND® steel (XRW) from other single-sided painted AM100 product), and more accurate allocation of topcoat paint by product and paint thickness.
- Weighted average product BMT for painted products: this study removed the anomalous modelling distinction between products with and without CORSTRIP® film by using average BMT for all painted products of the same metal coating type and thickness on the same paint line.
- Titanium dioxide dataset update: this study replaced the GaBi dataset used in the original study with a 2019 dataset from Titanium Dioxide Manufacturers Association (TDMA), which has higher impacts across all indicators except POCP.

The paint line modelling change, using average BMT for all painted products of the same metal coating type and thickness, and removal of the modelling distinction for products with and without CORSTRIP® film, has a significant impact on the results and the comparability of this study to the 2019 EPD. While the two studies are not directly comparable, readers will be able to see that the results in this EPD show that production impacts decreased across most EN15804+A1 environmental impact indicators, but increased slightly for GWP.

Analogous results have been generated from the 2019 model and data, but using a weighted average product BMT for all painted AM100 products and removing the CORSTRIP® film distinction, to provide a more accurate baseline for comparison to the current study. The comparison shows a slight decrease for GWP, as well as decreases for all other EN15804+A1 environmental impact indicators. The reductions align with the changes seen for low carbon⁶⁴ Hot Rolled Coil steel in the Steel - Hot Rolled Coil EPD updated in 2020, which is to be expected given the significance of the steel substrate to the overall results.

Based on EN 15804+A1 indicators using the analogous results generated from the 2019 model and data, the impacts for one flat square metre (1 m²) of COLORBOND® steel (XRW) at BMT 0.42mm have decreased by 0.2% for GWP, 40% for ODP, 5% for AP, 8% for EP, 16% for POCP, 17% for ADPE, and 6% for ADPF. The impacts for one flat square metre (1 m²) of COLORBOND® steel at BMT 0.48mm (XRW) have decreased by 0.5% for GWP, 40% for ODP, 6% for AP, 11% for EP, 13% for POCP, 11% for ADPE, and 11% for ADPF.

Environmental Product Declaration

COLORBOND® steel

References

AS 1397:2021, Continuous hot-dip metallic coated steel sheet and strip - Coatings of zinc and zinc alloyed with aluminium and magnesium.

AS/NZS 2728:2013, Prefinished/pre painted sheet metal products for interior/exterior building applications – Performance requirements.

EN 15804:2012+A1:2013, Sustainability of construction works – Environmental product declarations – Core rules for the product category of construction products

EN 15804:2012+A2:2019, Sustainability of construction works – Environmental product declarations – Core rules for the product category of construction products

General Programme Instructions for the International EPD® System, Version 3.01.

Instructions of the EPD Australasia Programme, Version 3.0.

ISO 14001:2015, Environmental management systems– Requirements with guidance for use

ISO 14021:2016, Environmental labels and declarations – Self-declared environmental claims (Type II environmental labelling)

ISO 14025:2006, Environmental labels and declarations – Type III environmental declarations – Principles and procedures

National Waste Report 2020, Pickin J et al., A report prepared for the Department of Agriculture, Water and the Environment by Blue Environment Pty Ltd, 4 November 2020, <https://www.dcceew.gov.au/environment/protection/waste/national-waste-reports/2020>

PCR 2012:01, Construction Products and Construction Services, Version 2.32, 2020.07.01

PCR 2019:14, Construction Products, Version 1.11, 2021-02-05

Sphera, GaBi LCA Database Documentation, 2020, <https://www.gabi-software.com/support/gabi/gabi-database-2022-lci-documentation/>

For further reference

EPD Owner **BlueScope Steel Limited**
steeldirect@bluescopesteel.com

LCA Author **BlueScope Steel Limited**
steeldirect@bluescopesteel.com
thinkstep-anz.com
info@thinkstep-anz.com

Programme Operator **EPD Australasia Limited**
info@epd-australasia.com

Product Website steel.com.au

BlueScope Awards and Certificates (ISO 14001, Worldsteel Climate Action Programme) bluescope.com/sustainable-steel/awards-and-certificates/

ResponsibleSteel™ certification for Port Kembla Steelworks bluescope.com/sustainable-steel/responsiblesteel/

BlueScope Sustainability Reporting bluescope.com/sustainable-steel/reports/



For further information,
contact BlueScope Steel Direct
1800 800 789
steel.com.au

BlueScope Steel Limited

Level 11, 120 Collins St, Melbourne VIC 3000, Australia
ABN 16 000 011 058

bluescope.com

[in](#) [🐦](#) @BlueScope