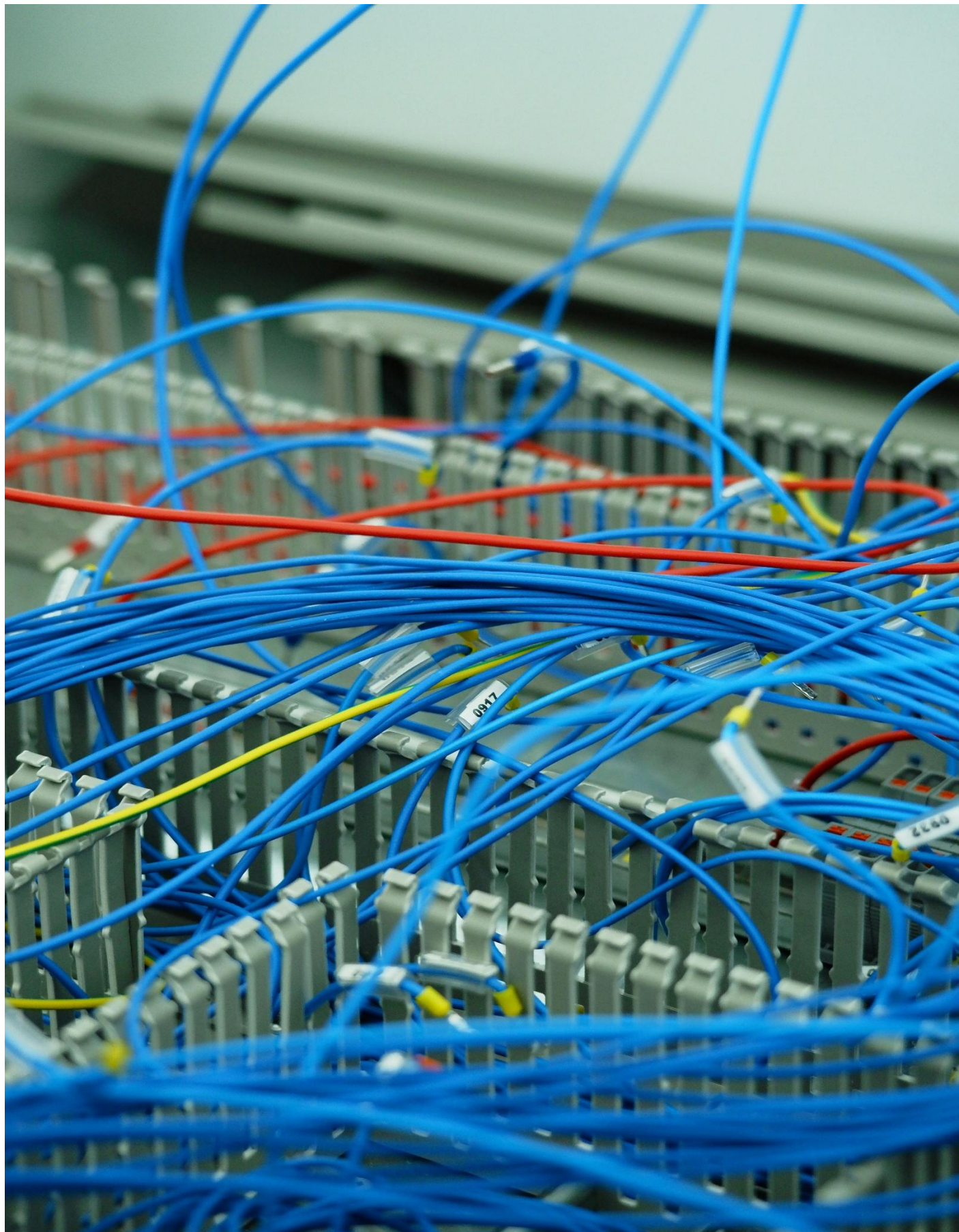


## WIRES, CABLES AND ACCESSORIES, EXCEPT CONSTRUCTION PRODUCTS

C-PCR-004 (TO PCR 2024:06)  
VERSION: 1.0.0

VALID UNTIL: 2027-11-16



1	Introduction .....	3
1.1	General .....	3
1.2	Role of this document .....	3
2	General information .....	5
2.1	Administrative information .....	5
2.2	Scope .....	6
3	PCR review and background information .....	7
4	LCA method .....	8
5	Content of the LCA report .....	9
6	Content and format of EPD .....	10
7	List of abbreviations .....	11
8	References .....	12
9	Version history of c-PCR .....	13

# 1 INTRODUCTION

## 1.1 GENERAL

This document constitutes complementary Product Category Rules (c-PCR) developed in the framework of the International EPD System: a programme for type III environmental declarations<sup>1</sup> according to ISO 14025:2006, ISO 14040:2006, ISO 14044:2006, and product-specific standards. Environmental Product Declarations (EPD) are voluntary documents for a company or organisation to present transparent, consistent and verifiable information about environmental performance of their product (goods or services).

The rules for the overall administration and operation of the programme are the General Programme Instructions (GPI), publicly available on [www.environdec.com](http://www.environdec.com). PCRs and c-PCRs complement the GPI and the normative standards by providing specific rules and guidelines for developing an EPD for one or more specific product categories (see Figure 1). A PCR/c-PCR should enable different practitioners using the PCR/c-PCR to generate consistent results when assessing products of the same product category.

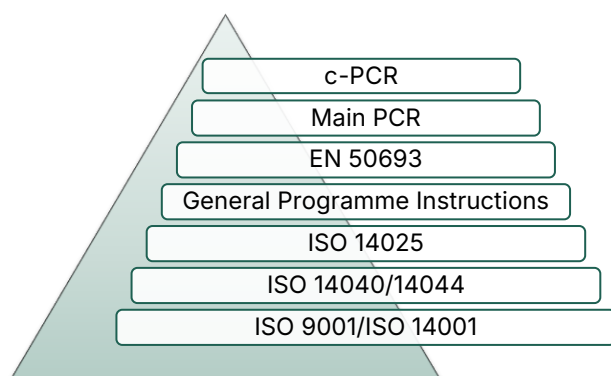


Figure 1 This c-PCR in relation to the hierarchy of standards and other documents.

The present c-PCR uses the following terminology:

- The term "shall" is used to indicate what is obligatory, i.e., a requirement.
- The term "should" is used to indicate a recommendation. Any deviation from a recommendation shall be justified in the EPD development process.
- The terms "may" or "can" are used to indicate an option that is permissible.

For definitions of further terms used in the document, see the GPI, the main PCR, and the normative standards.

The latest version of the c-PCR is available on [www.environdec.com](http://www.environdec.com).

Any references to this document shall include the PCR registration number, name and version.

## 1.2 ROLE OF THIS DOCUMENT

This c-PCR complements PCR 2024:06 Electronic and electric components (non-construction), available on [www.environdec.com](http://www.environdec.com). The c-PCR cannot be used by itself but shall be used together with PCR 2024:06, for products within the scope of the PCR (see Section 2.2.1). It is required to use an applicable c-PCR after it has been published 90 days. It is optional to use the c-PCR if it has been published for less than 90 days.

The document can be used together with any valid version of PCR 2024:06, regardless of the version of PCR 2024:06 referred to in this document.

---

<sup>1</sup> Type III environmental declarations in the International EPD System are referred to as EPDs, Environmental Product Declarations.

If requirements in the main PCR and the c-PCR are in conflict, the requirements in the c-PCR take precedence over those in the main PCR.

See Figure 2 for an illustration on how PCR 2024:06 and this c-PCR relate to each other and the EPDs that may be based on them.

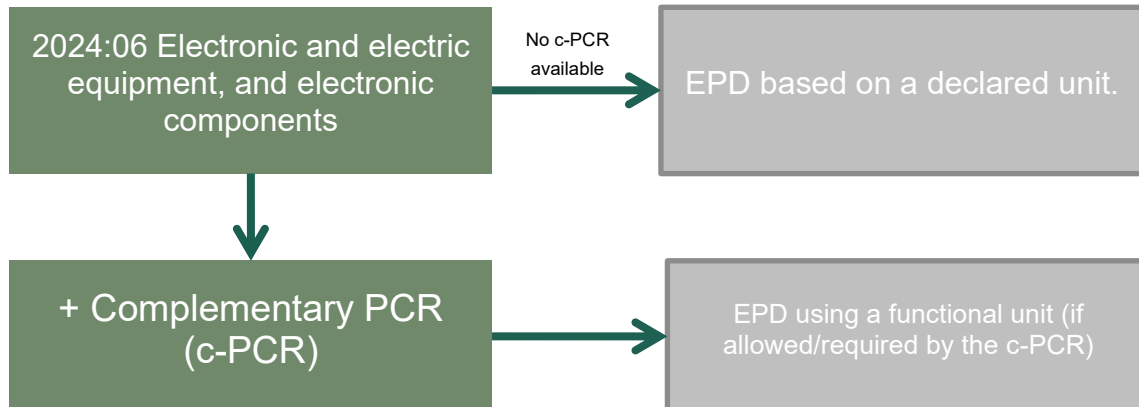



Figure 2 Overview of how PCR 2024:06 can be used directly, or together with a c-PCR, to develop an EPD. An EPD that uses a functional unit shall be based on a c-PCR. An EPD based on a declared unit can be developed without a c-PCR.



## 2 GENERAL INFORMATION

### 2.1 ADMINISTRATIVE INFORMATION

Name:	Wires, cables and accessories, except construction products
Registration number and version:	2024:06-c-PCR-004, Version 1.0.0
Programme:	 INTERNATIONAL EPD SYSTEM
Programme operator:	EPD International AB, Box 210 60, SE-100 31 Stockholm, Sweden. Website: <a href="http://www.environdec.com">www.environdec.com</a> E-mail: <a href="mailto:support@environdec.com">support@environdec.com</a>
PCR Moderator:	Not applicable
PCR Committee:	Not applicable
Publication date	2025-08-27 See Section 9 for a version history of the c-PCR.
Valid until:	2027-11-16 The validity may change. See <a href="http://www.environdec.com">www.environdec.com</a> for the latest version of the PCR and the latest information on its validity and transition periods between versions.
Development and updates:	<p>The c-PCR has been developed following ISO 14027, including public consultation and review. The rules for the development and updating processes are described in Section 9 of the GPI.</p> <p>The c-PCR is valid for a pre-determined time period to ensure that it is updated at regular intervals. When the c-PCR is about to expire, the PCR Moderator shall initiate a discussion with the Secretariat on if and how to proceed with updating the c-PCR and renewing its validity. A c-PCR may be updated before it expires, based on changes in normative standards or provided significant and well-justified proposals for changes or amendments are presented.</p> <p>When there has been an update of the c-PCR, the new version should be used to develop EPDs. For small updates (change of third-digit version number), the previous version is normally immediately removed from the PCR library on <a href="http://www.environdec.com">www.environdec.com</a> and there is no transition period. For medium updates (change of second-digit version number), the previous version of the c-PCR is valid in parallel during a transition period of at least 90 days, but not exceeding its previously set validity period. For large updates (change of first-digit version number), the previous version is valid in parallel during a transition period of at least 180 days, but not exceeding its previously set validity period.</p> <p>In case a c-PCR is developed by a CEN Product TC, the standard will replace this c-PCR, with a transition period of at least 90 days under which both are valid.</p> <p>Stakeholder feedback on PCRs is very much encouraged. Any comments on this PCR may be sent directly to the PCR Moderator and/or the Secretariat during its development or during its period of validity.</p>

WIRES, CABLES AND ACCESSORIES, EXCEPT CONSTRUCTION PRODUCTS

## WIRES, CABLES AND ACCESSORIES, EXCEPT CONSTRUCTION PRODUCTS

## WIRES, CABLES AND ACCESSORIES, EXCEPT CONSTRUCTION PRODUCTS

WIRES, CABLES AND ACCESSORIES, EXCEPT CONSTRUCTION PRODUCTS

WIRES, CABLES AND ACCESSORIES, EXCEPT CONSTRUCTION PRODUCTS

WIRES, CABLES AND ACCESSORIES, EXCEPT CONSTRUCTION PRODUCTS

WIRES, CABLES AND ACCESSORIES, EXCEPT CONSTRUCTION PRODUCTS

## WIRES, CABLES AND ACCESSORIES, EXCEPT CONSTRUCTION PRODUCTS

WIRES, CABLES AND ACCESSORIES, EXCEPT CONSTRUCTION PRODUCTS

## WIRES, CABLES AND ACCESSORIES, EXCEPT CONSTRUCTION PRODUCTS

WIRES, CABLES AND ACCESSORIES, EXCEPT CONSTRUCTION PRODUCTS

WIRES, CABLES AND ACCESSORIES, EXCEPT CONSTRUCTION PRODUCTS

### 3 PCR REVIEW AND BACKGROUND INFORMATION

This c-PCR refers to the PSR-0001-ed4-EN-2022 11 16 which was developed by PEP Ecopassport and has been adopted as a c-PCR by the International EPD System.

In addition to the open consultations and reviews managed by PEP Ecopassport, the process for adopting the c-PCR in the International EPD System included a review by the Technical Committee of EPD International acting as PCR Review Panel, conducted 2025-07-22 until 2025-08-27. The review chair was Rui Wang.

## 4 LCA METHOD

See PCR 2024:06. and PSR-0001-ed4-EN-2022 11 16.

In addition, the following additional requirements, specifications and restrictions are to be followed:

- All references to “PEP-PCR ed4-EN 2021 09 06”, “Product Category Rules”, “PCR” are replaced with references to PCR 2024:06.
- EPDs intended for the French market shall follow specific rules according to PEP-PCR ed4-EN 2021 09 06.
- All references to “Product Environmental Profiles” (PEP) are replaced with “Environmental Product Declarations” (EPD).
- If there is an applicable UN CPC code for the product, it shall be stated in the EPD (in the product description section).
- Data quality requirements and selection of data shall be followed according to PCR 2024:06.
- Electricity model shall be followed according to PCR 2024:06.
- The environmental performance indicators shall be declared ‘0’ only for parameters that have been calculated to be zero. This applies to all environmental performance indicators. See GPI for more guidance on how to declare units and quantities.
- A clarification is added in relation to Section 3.1 in PSR-0001-ed4-EN-2022 11 16 on ‘Functional unit and reference flow description’: While the PSR allows declaring environmental performance results per declared unit, in addition to per functional unit, this is not allowed based on PCR 2024:06. Thereof, only functional unit shall be used to declare the environmental performance results.
- A clarification is added in relation to Section 3.4 in PSR-0001-ed4-EN-2022 11 16 on ‘Development of scenarios (default scenarios)’: The rules in ‘Data quality requirements and other modelling guidance per lifecycle stage’ section of main PCR 2024:06 shall be followed. In cases where scenarios are required to be used according to PCR 2024:06 (for example, for the end-of-life stage) then scenarios and default values provided in PSR-0001-ed4-EN-2022 11 16 should be used. If other scenarios are used, it shall be justified in the LCA report and the EPD.
- A clarification is added in relation to Section 3.5 in PSR-0001-ed4-EN-2022 11 16 on ‘Rule(s) for extrapolation to a homogeneous environmental family’: The rules under ‘Multiple products from the same company’ section in PCR 2024:06 shall be followed instead.
- A clarification is added in relation to Section 3.6 in PSR-0001-ed4-EN-2022 11 16 on ‘Rule(s) applying to joint environmental declarations’: The rules under ‘Sector EPDs’ section in PCR 2024:06 shall be followed instead.



## 5 CONTENT OF THE LCA REPORT

See PCR 2024:06 and PSR-0001-ed4-EN-2022 11 16.

## 6 CONTENT AND FORMAT OF EPD

See PCR 2024:06 and PSR-0001-ed4-EN-2022 11 16.

In addition, the following additional requirements, specifications and restrictions are to follow:

- The EPD shall follow the format according to PCR 2024:06.
- The EPD shall include all mandatory declarations specified in PCR 2024:06 (e.g., share of specific data and content declaration).

## 7 LIST OF ABBREVIATIONS

See PCR 2024:06. and PSR-0001-ed4-EN-2022 11 16.

## 8 REFERENCES

CEN (2019) EN 50693:2019 Product category rules for life cycle assessments of electronic and electrical products and systems.

ISO (2006a) ISO 14025:2006, Environmental labels and declarations – Type III environmental declarations – Principles and procedures.

ISO (2006b) ISO 14040:2006, Environmental management – Life cycle assessment – Principles and framework.

ISO (2006c) ISO 14044: 2006, Environmental management – Life cycle assessment – Requirements and guidelines.

PCR 2024:06 Electronic and electric equipment, and electronic components (non-construction) (1.01) International EPD System. Publication Date: December 9, 2024.

PEP Ecopassport (2021) PCR Product Category Rules for Electrical, Electronic and HVAC-R Products (ed4). Publication date: September 06, 2021.

PEP Ecopassport (2025) PSR-0018-ed1.3-EN-2025 04 08 Specific Category Rules for Electric vehicle charging infrastructure. Publication date: April 8, 2025.

WIRES, CABLES AND ACCESSORIES, EXCEPT CONSTRUCTION PRODUCTS

## 9 VERSION HISTORY OF C-PCR

### VERSION 1.0.0, 2025-08-27

Original version of the c-PCR.

© 2025 EPD INTERNATIONAL AB

YOUR USE OF THIS MATERIAL IS SUBJECT TO THE GENERAL TERMS OF USE PUBLISHED ON BY EPD INTERNATIONAL AB:S HOMEPAGE AT. IF YOU HAVE NOT REGISTERED AND ACCEPTED EPD INTERNATIONAL AB:S THE GENERAL TERMS OF USE, YOU ARE NOT AUTHORISED TO EXPLOIT THIS WORK IN ANY MANNER.

COVER IMAGE © PEXELS.COM / CNRDMROGLU